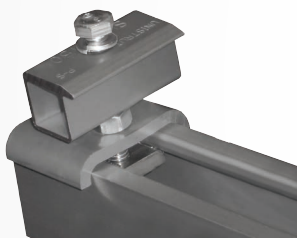


POWER-STRUT® SOLAR COMPONENTS

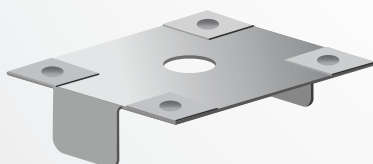
Power-Strut® represents a line of steel, aluminum, and fiberglass strut and accessories used extensively in electrical infrastructure support. Power-Strut is available in a range of corrosion inhibiting finishes making it a prime choice in today's marketplace. The Power-Strut system is infinitely adjustable for a multitude of configurations and uses. The newest addition of solar components to our extensive product line allows you to shape an effective solution for mounting solar panels that fits your exact needs.



SLR200 - Solar End-Clamp



SLR100 - Solar Mid-Clamp



WEEB - WMC

Solar End-Clamp Description

- End-clamp design for use with strut based racking system
- End-stop feature allows use with vertical strut
- Meets uplift loads of 350 lbs

Solar Mid-Clamp Description

- Mid-clamp design allows use with strut based racking system
- Provides .8"(21 mm) panel spacing
- Meets spacing requirements of WEEB-WMC
- Meets uplift loads of 350 lbs

WMC Description

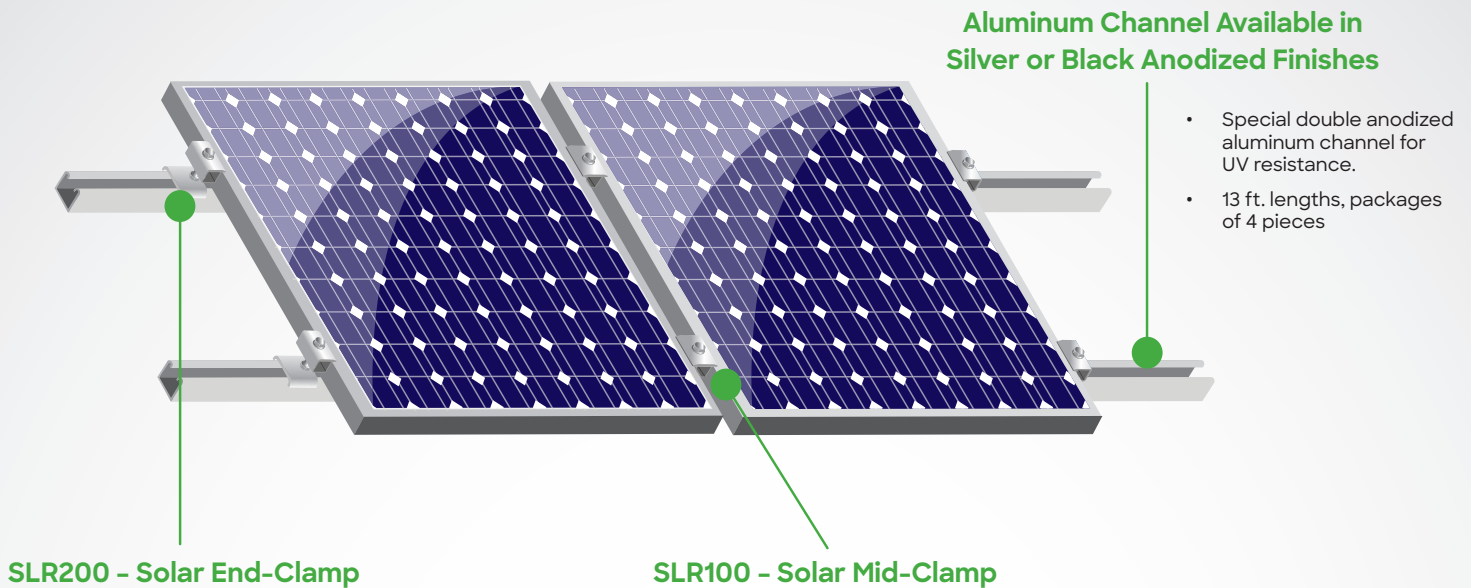
- Patented design features stainless steel teeth that pierce into anodized aluminum, providing a gas tight connection which prevents oxidation
- Meets ANSI/UL467 requirements for bonding/grounding systems
- Quick installation that is safe, reliable and consistent

| Part Number | Finish | Product Weight/ Piece (lb) |
|--------------|----------------------------|----------------------------|
| SLR100SA-KIT | Silver Anodized | 0.3920 |
| SLR100BA-KIT | Black Anodized | 0.3920 |
| SLR200SA-KIT | Silver Anodized | 0.2500 |
| SLR200BA-KIT | Black Anodized | 0.5050 |
| WEEB-WMC | Stainless Steel (Type 304) | 0.0076 |



For more info visit atkore.com/power-strut





Key Advantages

- The market's only specific panel mounting components made exclusively for use with Power-Strut
- Simple design used by the industry for a variety of installation methods and applications
- Stainless steel hardware included with all solar clamps
- Available in Black or Silver Anodized (Material AA-6063-T6) for corrosion protection and sleek appearance
- Best fit with Power-Strut channel to create less penetration, and superior slip resistance
- Designed for maximum loads up to 90 miles per hour
- Available and supported by Power-Strut's national network of distributors
- Accessories can also be used with any of the standard Power-Strut channels (10 ft. or 20 ft. steel and aluminum channels)
- **BUY AMERICA - MADE IN THE USA**

Visit Atkore.com for a complete selection of our products:

- Cope Cable Tray Systems
- Allied Conduit Products
- AFC Cable Systems

