



PVC & HDPE Pipe for Natural Gas Applications



 **Atkore™**

Table of Contents

HDPE



STREAM-LINE™ OIL & GAS PIPE
MDPE for Natural Gas Transmission..... 6
D2513 for Natural Gas Transmission..... 8

HDPE Truck Loading Chart..... 11

PVC



NATURAL GAS SLEEVING PIPE
Sleeve-It™ PVC..... 10

Product availability differs by region. Reach out to your sales representative for more information.

Bringing The Heat to Everyday Life.

Whether it's keeping us warm or cooking food, natural gas provides the heat we need in daily life. Atkore's PVC and HDPE pipe supports these essential functions with quality and reliability.

Long-Lasting Reliability

For delivering essential energy, pipe reliability is a top priority. PVC and HDPE have been proven to stand the test of time, maintaining strong performance.

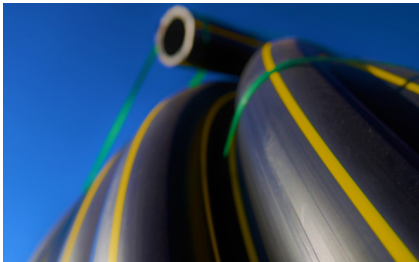
Build America, Buy America Certified

Our PVC & HDPE pipe is proudly made in the U.S. and is BABA compliant.

ASTM Compliance

Atkore natural gas pipe conforms to ASTM D2513 or ASTM D3350 to ensure quality and safety.

Applications



Underground Utility Gas Transmission

Whether it's from the gas main to the meter or from the meter to external uses, Atkore Stream-Line gets natural gas where it's needed most.



Utility Pipe Sleeving

PVC and PE pipe protects gas lines by helping to prevent damage, reduce leakages, and prevent corrosion.

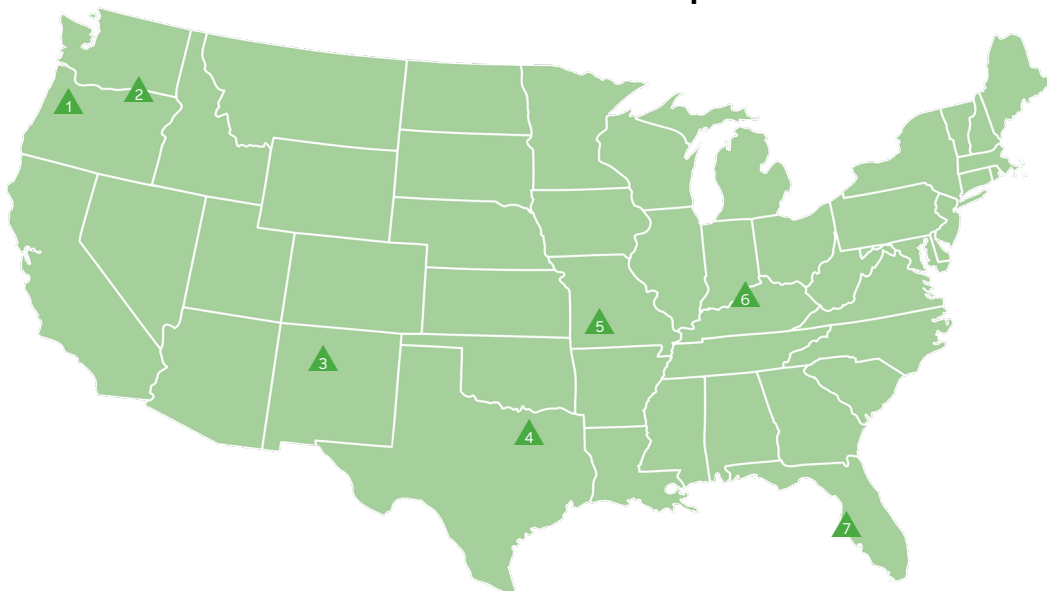
About



Atkore (NYSE: ATKR) is a global manufacturer of industrial products with 5,000+ employees and 49 manufacturing and distribution plants. Atkore produces a wide range of PVC and HDPE pipe products for Municipal Waterworks, Plumbing, Irrigation, Oil & Gas, Natural Gas, Industrial, and Electrical applications through the Heritage Plastics and United Poly Systems brands.

With our expansive product offerings, large network of manufacturing locations, and relentless focus on our customer service, we provide an end-to-end solution for infrastructure projects. Atkore pipe is proudly made in the U.S.A. and is Build America, Buy America compliant.

PVC & HDPE Pipe Plant Locations



- ▲ Eugene, OR
- ▲ Pendleton, OR
- ▲ Albuquerque, NM
- ▲ Dallas, TX
- ▲ Springfield, MO
- ▲ Louisville, KY
- ▲ Tampa, FL



Sustainability



Atkore's focus on sustainability can be seen in every facet of our operations: from achieving the ESG goals we set toward reducing carbon and GHG emissions two years ahead of our target, to our dedication to increasing energy efficiency at our plants, through the continued development of our climate risk management strategy.

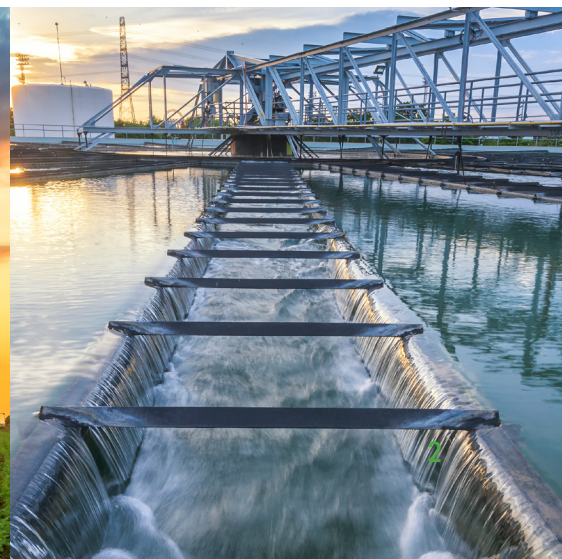
In 2023, we were recognized by Newsweek as one of America's Greenest Companies, were included in USA Today's list of America's Climate Leaders, and received the Ecovadis Bronze Sustainability Rating for the second year in a row.



Learn more about Atkore's ESG Goals

Our Commitment to Customers

At Atkore, our focus is on customer relationships. We strive for excellence in getting you the products you need, when you need them. Our team is always ready to support critical projects across the U.S. with high-quality pipe that's built to last.



How to Order



Placing an Order

Step 1: Complete a credit application and submit a W9 through your agent or customer service representative to get set up in our system.

Step 2: Work with your agent or CSR to obtain a quote and then submit a PO for the order.

Contact Customer Service: WaterProductCustomerService@atkore.com

Note that special orders are non-cancelable, non-returnable, and non-refundable.



Warranty Information

- Goods will materially conform to published specifications and be free from defects in materials and workmanship 12 months from date of manufacture.
- Repair or replacement of defective product.



See full
warranty details

HDPE Part Number Generator

All Atkore Legacy brand part numbers have been replaced, and we now reference our individual HDPE products in literature, labeling and price sheets using the part number builder and a 4-6 digit system SKU number, which are used for RFQ's, order entry and invoicing.

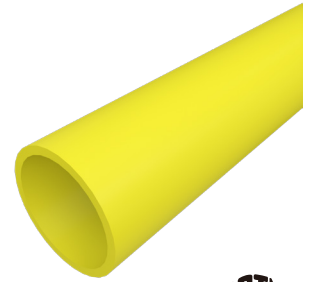
Atkore part numbers are created using ten different values describing the attributes that make up each product and are used to easily identify each product's characteristics.

U 125 05 A OR NN 2 NS US

Part No. Sections	Product	Size	SDR (SIDR)	Segmented	Color	Strip	Pull Tape	Lube	Ribbing	Market
Sample Section Value	Conduit/Duct	1.25"	13.5	Single way reel	Orange	None	1130#	None	Smooth	Smooth
Sample Value Code	U	125	05	A	OR	NN	2	N	S	US
Code Finder	UL Listed = U Pressure PE4710 = P MDPE = M	¾" = 075 1" = 100 1.25" = 125 1.5" = 150 2" = 200 2.5" = 250 3" = 300 4" = 400 5" = 500 6" = 600	SDR 7 = 01 SDR 9 = 02 SDR 11 = 03 SDR 11.5 = 04 SDR 13.5 = 05 SDR 15.5 = 06 SDR 17 = 07 SDR 19 = 08 SDR 21 = 09 SDR 32.5 = 10 SCH 40 = 11 SCH 80 = 12 SDR 5 = 13 SDR 26 = 16	Single way reel = A 2way reel = B 3way reel = C 4way reel = D	None = NN Black = BK Red = RD Orange = OR Tan = TN Slate = ST Gray = GY None = NS Green = GN Blue = BL Pink = PK White = WH Terra Cotta = TC Lime = LM Brown = BN Lilac = LC	None = NN Black = BK Red = RD Orange = OR Tan = TN Slate = ST Gray = GY None = NS Green = GN Blue = BL Pink = PK White = WH Terra Cotta = TC Lime = LM Brown = BN Lilac = LC	None = N 200# = 1 1130# = 2 1250# = 3 1800# = 4 2500# = 5 2500# Detectable = 6 1250# Detectable = 7 1800# Detectable = 8 4000# = 9	None = N Lubricated = Y	Smooth = S Ribbed = R	UL 651a Listed = US NSF 61 Potable Water = NS AWWA Water = AS Oil&Gas Gathering = FS MDPE Gas Distribution = MS HDPE D2513 O&G STREAMLINE = DS HDPE BLACK D5213 (GAS DISTRIBUTION) = HS Geothermal = GS

MDPE for Natural Gas Transmission

- Conforms to ASTM D2513 and ASTM F2897 Tracking and Traceability
- Diameter range of 1/2" - 8"
- IPS and CTS pipe sizes
- Available in sticks, coils, and reels
- Standard color is solid yellow for 1/2" - 6"
- PE2708 resin



Nominal Pipe Size (in)	SDR	Dimensions		Approximate Weight per 100'	Standard
		Average OD (in)	Min. Wall Thickness (in)		
IPS					
1/2	11	0.84	0.076	7.859	ASTM D2513
1/2	9.3	0.84	0.090	9.116	ASTM D2513
3/4	11	1.05	0.095	12.217	ASTM D2513
1	11	1.315	0.120	19.316	ASTM D2513
1	9	1.315	0.146	23.003	ASTM D2513
1 1/4	11	1.66	0.151	30.726	ASTM D2513
1 1/4	10	1.66	0.166	33.438	ASTM D2513
1 1/2	11	1.9	0.173	40.325	ASTM D2513
2	17	2.375	0.140	42.329	ASTM D2513
2	11	2.375	0.216	62.915	ASTM D2513
2	9	2.375	0.264	75.000	ASTM D2513
3	11.5	3.5	0.304	131.009	ASTM D2513
3	11	3.5	0.318	136.465	ASTM D2513
3	9	3.5	0.389	162.900	ASTM D2513
4	13.5	4.5	0.333	187.414	ASTM D2513
4	11.5	4.5	0.391	216.801	ASTM D2513
4	11	4.5	0.409	225.685	ASTM D2513
4	9	4.5	0.500	269.200	ASTM D2513
6	13.5	6.625	0.491	406.783	ASTM D2513
6	11.5	6.625	0.576	470.086	ASTM D2513

These are nominal values and used as guidelines only.
This is not a product specification and does not indicate minimum or maximum operating values.

MDPE for Natural Gas Transmission (cont'd)

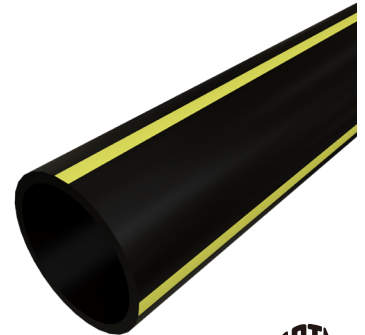
Nominal Pipe Size (in)	SDR	Dimensions		Approximate Weight per 100'	Standard
		Average OD (in)	Min. Wall Thickness (in)		
IPS					
6	11	6.625	0.602	489.015	ASTM D2513
6	9	6.625	0.736	583.300	ASTM D2513
8	11.5	8.625	0.750	796.932	ASTM D2513
8	11	8.625	0.784	829.189	ASTM D2513
8	9	8.625	0.958	988.100	ASTM D2513
CTS					
½	0.090	0.625	0.090	6.418	ASTM D2513
¾	0.090	0.875	0.090	9.443	ASTM D2513
1	0.121	1.125	0.121	16.394	ASTM D2513
1	0.101	1.125	0.101	13.945	ASTM D2513
1	0.099	1.125	0.099	13.711	ASTM D2513
1	0.090	1.125	0.090	12.587	ASTM D2513
1¼	0.121	1.375	0.121	20.506	ASTM D2513
1¼	0.090	1.375	0.090	15.644	ASTM D2513

These are nominal values and used as guidelines only.
This is not a product specification and does not indicate minimum or maximum operating values.

HDPE Stream-Line™

D2513 for Natural Gas Transmission

- Conforms to ASTM D2513 and ASTM F2897 Tracking and Traceability
- Diameter range of 1/2" - 16"
- IPS and CTS pipe sizes
- Available in sticks, coils, and reels
- Standard color is black with yellow striping
- Bi-Modal PE4710 Resin



Nominal Pipe Size (in)	SDR	Dimensions		Approximate Weight per 100'	Standard
		Average OD (in)	Min. Wall Thickness (in)		
IPS					
1/2	11	0.84	0.076	8.026	ASTM D2513
1/2	9.3	0.84	0.090	9.310	ASTM D2513
3/4	11	1.05	0.095	12.477	ASTM D2513
1	11	1.315	0.120	19.727	ASTM D2513
1 1/4	11	1.66	0.151	31.380	ASTM D2513
1 1/4	10	1.66	0.166	34.149	ASTM D2513
1 1/2	11	1.9	0.173	41.183	ASTM D2513
2	11.5	2.375	0.207	61.200	ASTM D2513
2	11	2.375	0.216	64.254	ASTM D2513
2	9	2.375	0.264	76.631	ASTM D2513
3	11.5	3.5	0.304	133.797	ASTM D2513
3	11	3.5	0.318	139.369	ASTM D2513
3	9	3.5	0.389	166.423	ASTM D2513
4	13.5	4.5	0.333	191.401	ASTM D2513
4	11.5	4.5	0.391	221.414	ASTM D2513
4	11	4.5	0.409	230.486	ASTM D2513
4	9	4.5	0.500	275.107	ASTM D2513
6	17	6.625	0.390	335.442	ASTM D2513
6	13.5	6.625	0.491	415.438	ASTM D2513
6	11.5	6.625	0.576	480.088	ASTM D2513
6	11	6.625	0.602	499.420	ASTM D2513

These are nominal values and used as guidelines only.
This is not a product specification and does not indicate minimum or maximum operating values.

D2513 for Natural Gas Transmission (cont'd)

Nominal Pipe Size (in)	SDR	Dimensions		Approximate Weight per 100'	Standard
		Average OD (in)	Min. Wall Thickness (in)		
IPS					
8	9	6.625	0.736	595.800	ASTM D2513
8	17	8.625	0.507	567.873	ASTM D2513
8	13.5	8.625	0.639	703.529	ASTM D2513
8	11.5	8.625	0.750	813.888	ASTM D2513
8	11	8.625	0.784	846.832	ASTM D2513
8	9	8.625	0.958	1010.067	ASTM D2513
10	17	10.75	0.632	882.406	ASTM D2513
10	13.5	10.75	0.796	1092.549	ASTM D2513
10	11.5	10.75	0.935	1264.488	ASTM D2513
10	11	10.75	0.977	1315.243	ASTM D2513
10	9	10.75	0.392	1569.979	ASTM D2513
12	17	12.75	0.750	1242.660	ASTM D2513
12	13.5	12.75	0.944	1537.618	ASTM D2513
12	11.5	12.75	1.109	1778.730	ASTM D2513
12	11	12.75	1.159	1850.753	ASTM D2513
12	9	12.75	1.417	2208.499	ASTM D2513
14	17	14	0.824	1497.980	ASTM D2513
14	13.5	14	1.037	1853.802	ASTM D2513
14	11.5	14	1.217	2144.383	ASTM D2513
14	11	14	1.273	2231.173	ASTM D2513
14	9	14	1.556	2662.766	ASTM D2513
16	17	16	0.941	1955.891	ASTM D2513
16	13.5	16	1.185	2421.418	ASTM D2513
16	11.5	16	1.391	2800.827	ASTM D2513
16	11	16	1.455	2914.547	ASTM D2513
16	9	16	1.778	3477.900	ASTM D2513
CTS					
½	0.090	0.625	0.090	6.555	ASTM D2513
¾	0.090	0.875	0.090	9.644	ASTM D2513
1	0.121	1.125	0.121	16.742	ASTM D2513
1	0.101	1.125	0.101	14.242	ASTM D2513
1	0.099	1.125	0.099	14.003	ASTM D2513
1	0.090	1.125	0.090	12.855	ASTM D2513
1¼	0.121	1.375	0.121	20.943	ASTM D2513
1¼	0.090	1.375	0.090	15.976	ASTM D2513

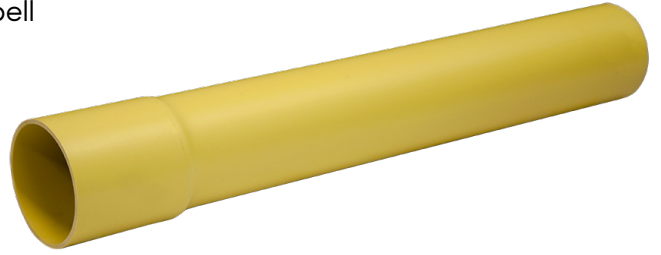
Note: CTS is measured by wall thickness, not SDR.

These are nominal values and used as guidelines only.
This is not a product specification and does not indicate minimum or maximum operating values.

PVC Natural Gas Sleeving

Sleeve-It™ PVC

- Product manufactured with one integral solvent-weld bell per length
- Pipe is intended for sleeving applications and carries no pressure rating
- Standard overall pipe length is 20 feet
- Standard color is yellow



Trade Size (in)	Part Number	Average OD (in)	Weight per Foot (WPF)	Crate Quantity (ft)
Schedule 40				
1½	7415020	1.900	0.5556	4,500
2	7420020	2.375	0.7473	2,800
3	7430020	3.500	1.5500	1,760
4	7440020	4.500	2.2088	1,140
6	7460020	6.625	3.8863	520
8	7480020	8.625	5.8500	300
SDR 26				
1¼	7612520	1.660	0.2230	6,600
1½	7615020	1.900	0.2921	4,500
2	7620020	2.375	0.4564	2,800
3	7630020	3.500	0.9912	1,760
4	7640020	4.500	1.6386	1,140
6	7660020	6.625	3.5515	520

HDPE Truck Loading Chart

Reels

Reels Per Truck		24	18	16	14	12	12	8
Pipe Diameter	SDR	48" Reel	66" Reel	72" Reel	83" Reel	96" Reel	102" Reel	120" Reel
3/4"	7	4,000'	8,000'	10,000'	X	X	X	X
3/4"	9	4,000'	8,000'	10,000'	X	X	X	X
3/4"	11	4,000'	8,000'	10,000'	X	X	X	X
3/4"	13.5	4,000'	8,000'	10,000'	X	X	X	X
1"	7	2,500'	5,500'	6,500'	10,000'	X	X	X
1"	9	2,500'	5,500'	6,500'	10,000'	X	X	X
1"	11	2,500'	5,500'	6,500'	10,000'	X	X	X
1"	13.5	2,500'	5,500'	6,500'	10,000'	X	X	X
1 1/4"	7	1,000'	3,500'	4,250'	6,600'	8,750'	X	X
1 1/4"	9	1,000'	3,500'	4,250'	6,600'	8,750'	X	X
1 1/4"	11	1,000'	3,500'	4,250'	6,600'	8,750'	X	X
1 1/4"	13.5	1,000'	3,500'	4,250'	6,600'	8,750'	X	X
1 1/4"	15.5	1,000'	3,500'	4,250'	6,600'	8,750'	X	X
1 1/4"	17	1,000'	3,500'	4,250'	6,600'	8,750'	X	X
1 1/2"	7	1,000'	2,500'	3,000'	4,500'	6,300'	7,250'	X
1 1/2"	9	1,000'	2,500'	3,000'	4,500'	6,300'	7,250'	X
1 1/2"	11	1,000'	2,500'	3,000'	4,500'	6,300'	7,250'	X
1 1/2"	13.5	1,000'	2,500'	3,000'	4,500'	6,300'	7,250'	X
1 1/2"	15.5	1,000'	2,500'	3,000'	4,500'	6,300'	7,250'	X
1 1/2"	17	1,000'	2,500'	3,000'	4,500'	6,300'	7,250'	X
2"	7	500'	1,500'	2,000'	2,900'	4,150'	4,500'	X
2"	9	500'	1,500'	2,000'	2,900'	4,150'	5,000'	X
2"	11	500'	1,500'	2,000'	2,900'	4,150'	5,000'	X
2"	13.5	500'	1,500'	2,000'	2,900'	4,150'	5,000'	X
2"	15.5	500'	1,500'	2,000'	2,900'	4,150'	5,000'	X
2"	17	X	1,200'	2,000'	2,700'	4,000'	4,500'	X

HDPE Truck Loading Chart

Reels

Reels Per Truck		24	18	16	14	12	12	8
Pipe Diameter	SDR	48" Reel	66" Reel	72" Reel	83" Reel	96" Reel	102" Reel	120" Reel
3"	7	X	X	X	X	1150'	1,400'	2,400'
3"	9	X	X	X	X	1150'	1,500'	2,400'
3"	11	X	X	X	X	1150'	1,500'	2,400'
3"	13.5	X	X	X	X	1150'	1,500'	2,400'
3"	15.5	X	X	X	X	1,000'	1,400'	2,400'
3"	17	X	X	X	X	1,000'	1,400'	2,400'
4"	7	X	X	X	X	550'	800'	1,500'
4"	9	X	X	X	X	550'	800'	1,500'
4"	11	X	X	X	X	550'	800'	1,500'
4"	13.5	X	X	X	X	550'	800'	1,500'
4"	15.5	X	X	X	X	X	X	X
4"	17	X	X	X	X	X	X	X
6"	7	X	X	X	X	X	X	450'
6"	9	X	X	X	X	X	X	450'
6"	11	X	X	X	X	X	X	450'
6"	13.5	X	X	X	X	X	X	450'
6"	15.5	X	X	X	X	X	X	X
6"	17	X	X	X	X	X	X	X

HDPE Truck Loading Chart

Sticks

Size	Pressure Class	Bundle qty	Bundles/ TL	Stick Length	TL QTY
IPS					
1"	335-65	163	60	20	195600
1"	335-65	163	30	40	195600
2"	335-65	98	36	20	70560
2"	335-65	98	18	40	70560
2"	335-65	98	18	50	88200
3"	335-65	50	28	20	28000
3"	335-65	50	14	40	28000
3"	335-65	50	14	50	35000
4"	335-65	29	28	20	16240
4"	335-65	29	14	40	16240
4"	335-65	29	14	50	20300
6"	335-65	26	16	20	8320
6"	335-65	26	8	40	8320
6"	335-65	26	8	50	10400
7"	335-65	17	20	20	6800
7"	335-65	17	10	40	6800
7"	335-65	17	10	50	8500
8"	335-65	14	16	20	4480
8"	335-65	14	8	40	4480
8"	335-65	14	8	50	5600
10"	335-65	9	16	20	2880
10"	335-65	9	8	40	2880
10"	335-65	9	8	50	3600
12"	335-65	4	24	20	1920
12"	335-65	4	12	40	1920
12"	335-65	4	12	50	2400
14"	335-65	7	24	20	3360
14"	335-65	7	12	40	3360
14"	335-65	7	6	50	2100

HDPE Truck Loading Chart

Sticks

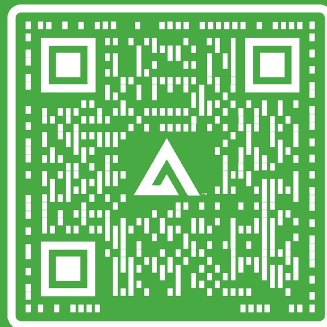
Size	Pressure Class	Bundle qty	Bundles/ TL	Stick Length	TL QTY
IPS					
16"	335-250	6	6	20	720
16"	335-250	6	6	40	1440
16"	335-250	6	4	50	1200
16"	200-65	6	12	20	1440
16"	200-65	6	6	40	1440
16"	200-65	6	5	50	1500
18"	335-250	5	6	20	600
18"	335-250	5	4	40	800
18"	335-250	5	4	50	1000
18"	200-65	5	6	20	600
18"	200-65	5	5	40	1000
18"	200-65	5	5	50	1250
20"	335-65	5	8	20	800
20"	335-65	5	4	40	800
20"	335-65	5	4	50	1000
22"	335-65	4	8	20	640
22"	335-65	4	4	40	640
22"	335-65	4	4	50	800
24"	335-65	4	6	20	480
24"	335-65	4	3	40	480
24"	335-65	4	4	50	800
26"	335-65	3	6	20	360
26"	335-65	3	3	40	360
26"	335-65	3	3	50	450

HDPE Truck Loading Chart

Coils

Size	Pressure Class	Coils per Pallet	Pallet Size	Coil Length
IPS				
¾"	335-130	8	48	500
¾"	335-130	3	48	2000
1"	335-130	7	48	500
1"	335-130	5	60	1000
1"	335-130	3	60	2000
1¼"	335-130	5	60	5000
1¼"	335-130	3	80	1000
1¼"	335-130	3	80	2000
1½"	335-130	7	80	500
1½"	335-130	7	80	1000
2"	335-130	7	80	500
2"	335-130	7	80	1000
2"	335-130	7	80	2000
3"	335-139	4	CRADLE OR STANDING	500
3"	335-139	2	CRADLE OR STANDING	1000
4"	335-200	3	CRADLE OR STANDING	500
4"	335-200	2	CRADLE OR STANDING	800
6"	200	2	CRADLE OR STANDING	500

Get in Touch



waterproductcustomerservice@atkore.com



**BUILDING BETTER
TOGETHER**

Atkore

16100 South Lathrop Avenue
Harvey, IL 60426

atkore.com/markets/water