



 **Atkore™**

SecurKore™ Perimeter Security Solutions

Atkore has developed a complete perimeter security solution to provide a customized level of protection with the ease of a turn-key system.

From Allied Tube & Conduit® framework to Razor Ribbon® barbed tape to expanded metal panels and everything in between, Atkore offers a full product inventory, flexibility, and the expertise to help execute your project with confidence. Easily installed new or as a retrofit over current chain link fencing, SecurKore™ is here to help protect your valuable assets.

Who We Protect

Critical Infrastructures such as:

- ▲ Energy & Utility Substations and Power Facilities
- ▲ Government Agencies
- ▲ Correctional Facilities
- ▲ Special Projects

Key Benefits

- ▲ One-stop-shop: we stock every product needed project-wide
- ▲ Turn-key full service support
- ▲ Anti-cut/anti-climb properties
- ▲ Visual and physical deterrent
- ▲ Flexible configurations
- ▲ Easy to install

Note: Expanded metal panels and framework available with and without Razor Ribbon topper options. Design services available. **For more information email: razorribbonsales@atkore.com or call (877) 285-4066.**

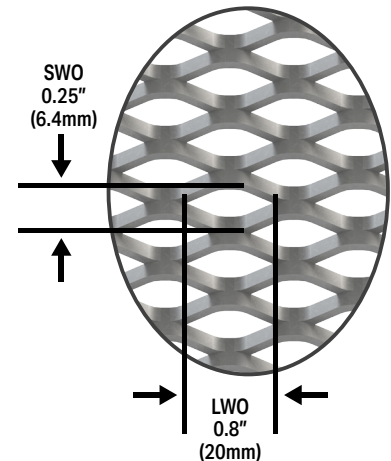
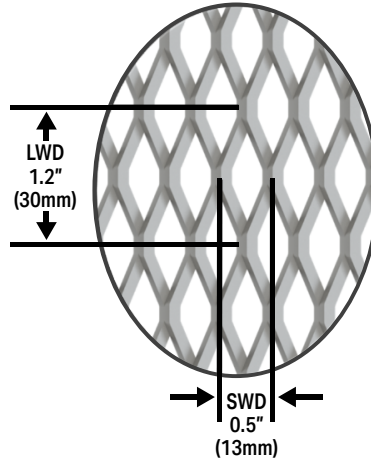
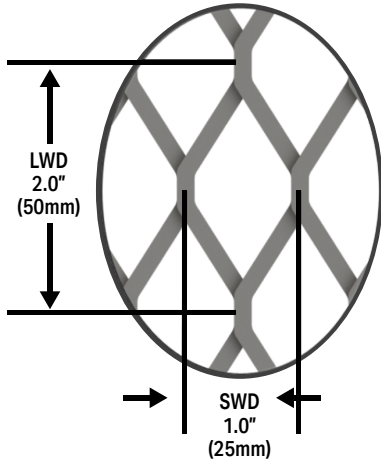




Expanded Metal Mesh

Expanded metal panels are made from one solid steel sheet that is simultaneously slit and stretched to form a diamond pattern. This produces a rigid mesh panel free from welds and is inherently anti-cut and anti-climb.

Expanded metal panels come in two forms, raised and flattened. The finished expanded metal panel that comes off the press is considered raised. These panels can then go through a cold roll mill to become flattened. This process leaves the surface of the panel smooth and flat. See our key features and benefits for additional information on the benefits of expanded metal.



Mini Mesh

- ¾" - #9 Raised HDG
- 0.688" x 1.562" Opening Size
- 68% Open Area
- 1.98 lbs/sf approx.

Ultra Mini Mesh

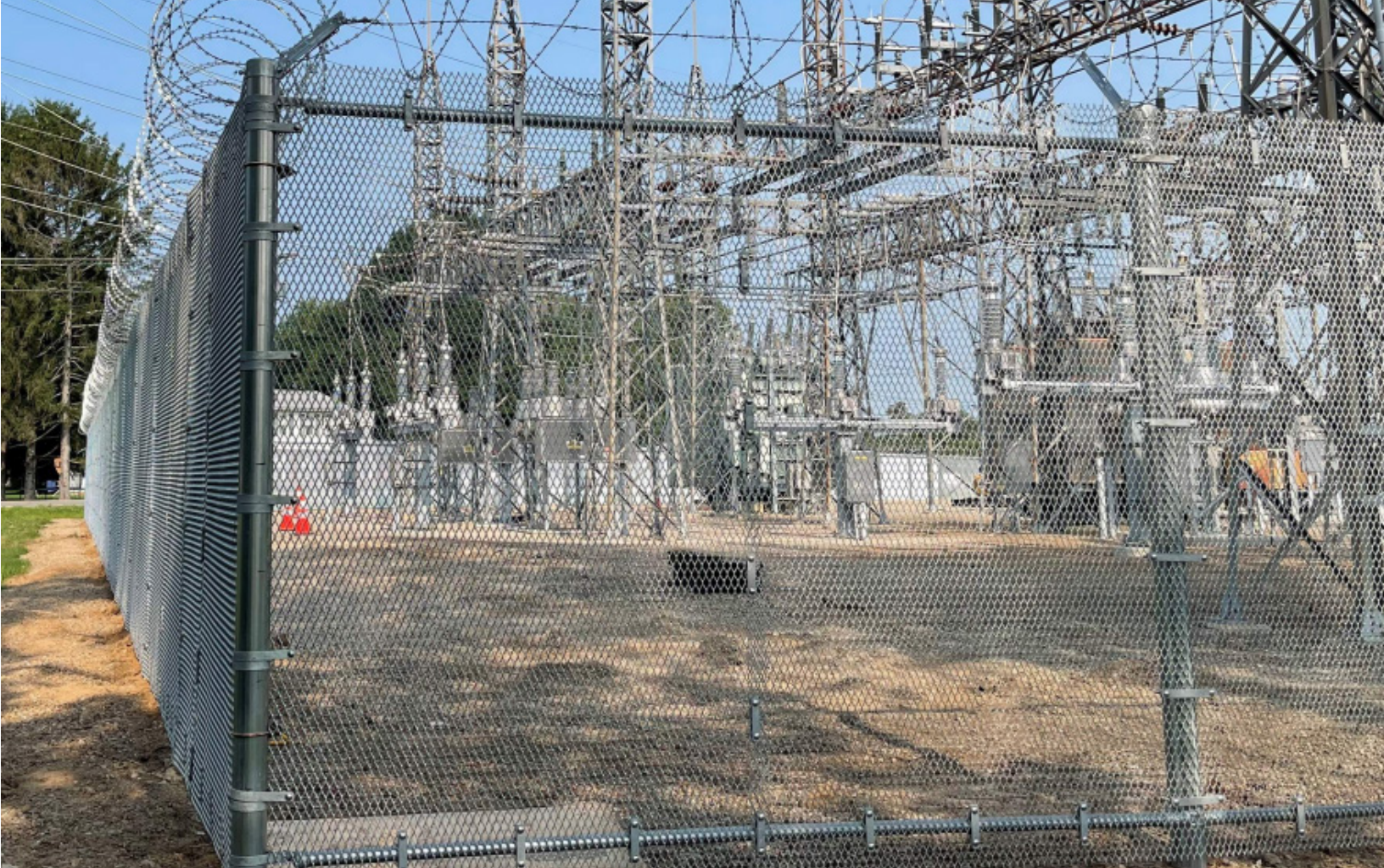
- ½" - #13 Raised HDG
- 0.312" x 0.938" Opening Size
- 57% Open Area
- 1.73 lbs/sf approx.

Slotted Mesh

- ½" - #13 Raised (0.188) HDG
- 0.250" x 0.800" Opening Size
- 25% Open Area
- 3.06 lbs/sf approx.

SecurKore™ Mesh Style	Spec	Description	Short Way of Diamond	Long Way of Diamond	Strand Thickness	Strand Width	% Open Area	Weight per sq. ft. Galvanized
			in.	in.	in.	in.		lbs.
SecurKore™ 206R	0206 #13R	2" X 6" Diamond	2.00	6.00	0.086	0.145	86%	0.56
SecurKore™ 349R	¾" #9R	Mini Mesh	1.00	2.00	0.134	0.150	68%	1.98
SecurKore™ 349F	¾" #9F	Mini Mesh Flattened	1.00	2.00	0.120	0.165	64%	1.75
SecurKore™ 1213R	½" #13R	Ultra Mini Mesh	0.50	1.20	0.090	0.096	57%	1.73
SecurKore™ 1213F	½" #13F	Ultra Mini Mesh Flattened	0.50	1.20	0.078	0.107	52%	1.61
SecurKore™ 1213R188	½" #13R (0.188)	Slotted Mesh	0.25	0.80	0.188	0.090	25%	3.06
SecurKore™ 17R	1" #7R	Heavy Gauge Mesh 1	1.00	2.40	0.179	0.275	52%	3.76
SecurKore™ 1126R	1 ½" #6R	Heavy Gauge Mesh 2	1.33	3.00	0.198	0.203	69%	2.75
SecurKore™ 1418F	¼" #18F	Snake Mesh Flattened	0.25	1.00	0.040	0.080	36%	0.97





Features and Benefits

Key Features	Key Benefits
Cut from Solid Steel	Expanded Metal Panels will never have welds that fail. Welded mesh is susceptible to rusting at the welded joints.
Rigid	Capable of withstanding wind loads. Panels can easily accommodate the weight of additional perimeter security appurtenances: including barbed wire, cameras, sensor cables, etc.
Anti-Cut / Anti-Climb Properties	Small openings make it significantly more difficult to cut or climb. Cutting requires special tools and intruder must cut a hole large enough to climb through.
Easy Installation	No springing action during installation resulting in less field work. Panels install more accurately without waste, dragging, or overlapping. Panels do not require special heavy equipment or machinery to install.
Flexibility	Panels can be installed as a standalone or easily integrated with any existing framework. Panel design can be customized to your specific needs.
Visual Deterrence	The increased height, intimidating appearance, and additional layer of security deters intruders from attempting to break into your site.



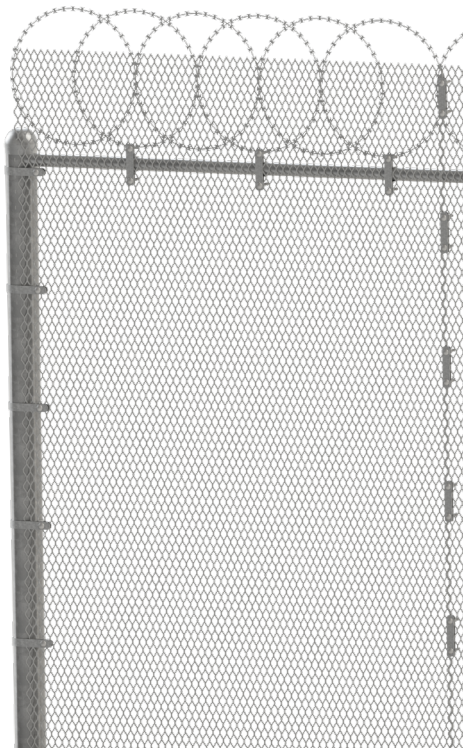
A Unique One-Stop Solution to Fit Your Security Needs

Our Most Popular Offerings

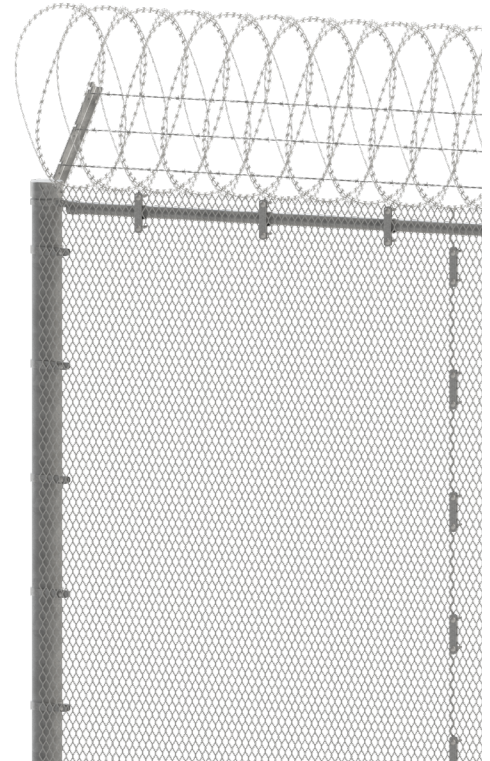
SecurKore™ perimeter security solutions provides you with a level of protection expertly crafted to meet the needs of your project. From framework and gates to barbed tape and installation hardware like clamps, bands, hog ties, and carriage bolts, Atkore provides you with everything you need to execute your project. We are proudly manufactured and integrated in America and comply with federal programs. Shipped from Hebron, OH.



Mini Mesh Panels with Barbed Wire

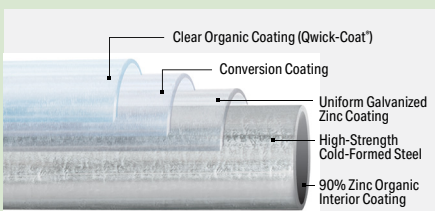


Mini Mesh Panels with Flat Razor Wrap



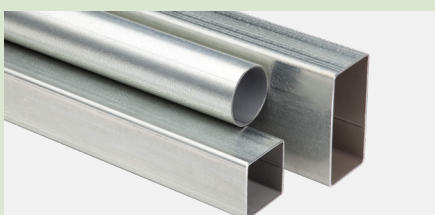
Mini Mesh Panels with Concertina

Framework Options



SS-40 Fence Framework

Manufactured with cold-formed steel which provides high yield and tensile strength, followed by a uniform triple layer of corrosion protection. The coating consists of zinc, a conversion coating, and a clear organic top coat applied in-line by the patented continuous Flo-Coat® process from Atkore Allied Tube & Conduit®.



Gatorshield

In-line galvanized coating that has 50% more zinc over the standard and meets grounding requirements per UL® 2703. The outside diameter is 100% coated with three layers of corrosion protection that work harmoniously with each other. The inside diameter is 100% coated with a corrosion resistant zinc based coating.

Easily installed new or as a retrofit over current chain link fencing, our solution is here to help protect your valuable assets.

Before



After



SS-40 Pipe Sizes

Fence Industry	Decimal O.D. Equivalent		Pipe Wall Thickness		Weight		Selection Modulus	x	Min. Yield Strength	=	Max. Bending Moment	Calculated Load		
	(in)	(mm)	(in)	(mm)	(lb/ft)	(kg/m)						(in ³)	(psi)	(lb/in)
O.D.	(in)	(mm)	(in)	(mm)	(lb/ft)	(kg/m)	(in ³)	x	(psi)	=	(lb/in)	(lb)	(lb)	(lb)
1 3/8"	1.315	33.40	0.104	2.64	1.35	2.01	0.1110	x	50,000	=	5555	185	116	77
1 1/2"	1.660	42.16	0.111	2.82	1.84	2.74	0.1961	x	50,000	=	9805	327	204	136
2"	1.900	48.26	0.120	3.05	2.28	3.39	0.2810	x	50,000	=	14050	468	293	195
2 1/2"	2.375	60.33	0.130	3.30	3.12	4.64	0.4881	x	50,000	=	24405	814	508	339
3"	2.875	73.03	0.160	4.06	4.64	6.90	0.8778	x	50,000	=	43890	1463	914	610
3 1/2"	3.500	88.90	0.160	4.06	5.71	8.50	1.3408	x	50,000	=	67040	2235	1397	931
4"	4.000	101.60	0.160	4.06	6.56	9.76	1.7819	x	50,000	=	89095	2970	1856	1237



**BUILDING BETTER
TOGETHER**

Atkore
16100 South Lathrop Avenue
Harvey, IL 60426

Atkore Hebron
250 Capital Dr,
Hebron, OH 43025

TOLL FREE / 877-285-4066
EMAIL / razorribbonsales@atkore.com

atkore.com/perimeter-security

©2024 Atkore. All rights reserved.
ATKR-BK-7027-2409