

PVC Conduit and Fittings

The Right People, The Right Products, The Right Places



Atkore[™]
Heritage
Plastics

Building better together.

As the leader in infrastructure solutions, Atkore has brought together the brands that you've trusted for years, allowing us to better partner with those who are building what's next.



Allied Tube & Conduit ▲ AFC Cable Systems ▲ Heritage Plastics ▲ Unistrut ▲ Unistrut Construction ▲ Cope
US Tray ▲ Calbrite ▲ Calbond ▲ Kaf-Tech ▲ Columbia-MBF ▲ Eastern Wire + Conduit ▲ ACS/Uni-Fab ▲ Cii
Power-Strut ▲ Calconduit ▲ Razor Ribbon ▲ Calpipe Security ▲ Vergokan ▲ Flexicon ▲ Marco

Learn more at atkore.com

Table of Contents

| | | | |
|--|-------|-----------------------------|-------|
| About Atkore | 4 | Swedge Reducers | 24 |
| About Heritage Plastics | 5 | 5° Couplings | 25 |
| Product Category List | 5 | Slip Meter Risers | 25 |
| FAQ's and Additional Web Resources | 6 | End Bells..... | 26 |
| Physical Properties..... | 7 | Reducer Bushings | 26 |
| Part Number Guide | 7 | Spacers | 27 |
| Schedule 40 and 80 Rigid PVC Conduit | 8 | Junction Boxes..... | 27 |
| Utility Duct | 9-10 | Access Fittings..... | 28 |
| C-Duct | 10 | Meter Offsets..... | 29 |
| Schedule 40 Standard Radius Elbows | 11-13 | Pipe Straps | 29 |
| Schedule 80 Standard Radius Elbows | 14-16 | Pull Elbows..... | 29 |
| Schedule 40 Plain End Special Radius Elbows...17 | | Expandable Plugs..... | 29 |
| Schedule 40 Bell End Special Radius Elbows | 18 | Temporary Plugs..... | 29 |
| Schedule 80 Special Radius Elbows | 19 | Junction Box Adapters | 30 |
| Utility and C-Duct Special Radius Elbows..... | 20 | Service Entrance Heads..... | 30 |
| Couplings | 21 | End Caps | 30 |
| Terminal Adapters | 22 | F-Series Boxes | 31 |
| Female Adapters | 22 | Covers..... | 32 |
| Expansion Couplings | 23 | Cement/Cleaner/Primer..... | 33 |
| Repair Sleeve Couplings..... | 23 | Notes..... | 34-35 |
| Swedge Couplings | 24 | | |

Atkore is forging a future where our employees, customers, suppliers, shareholders and communities are building better together – a future focused on serving the customer and powering and protecting the world.

With approximately 3,900 employees and 67 manufacturing and distribution facilities worldwide, Atkore is a leading provider of electrical, safety and infrastructure solutions.

Our Mission

To be the customer's first choice by providing unmatched quality, delivery and value based on sustainable excellence in strategy, people and processes.

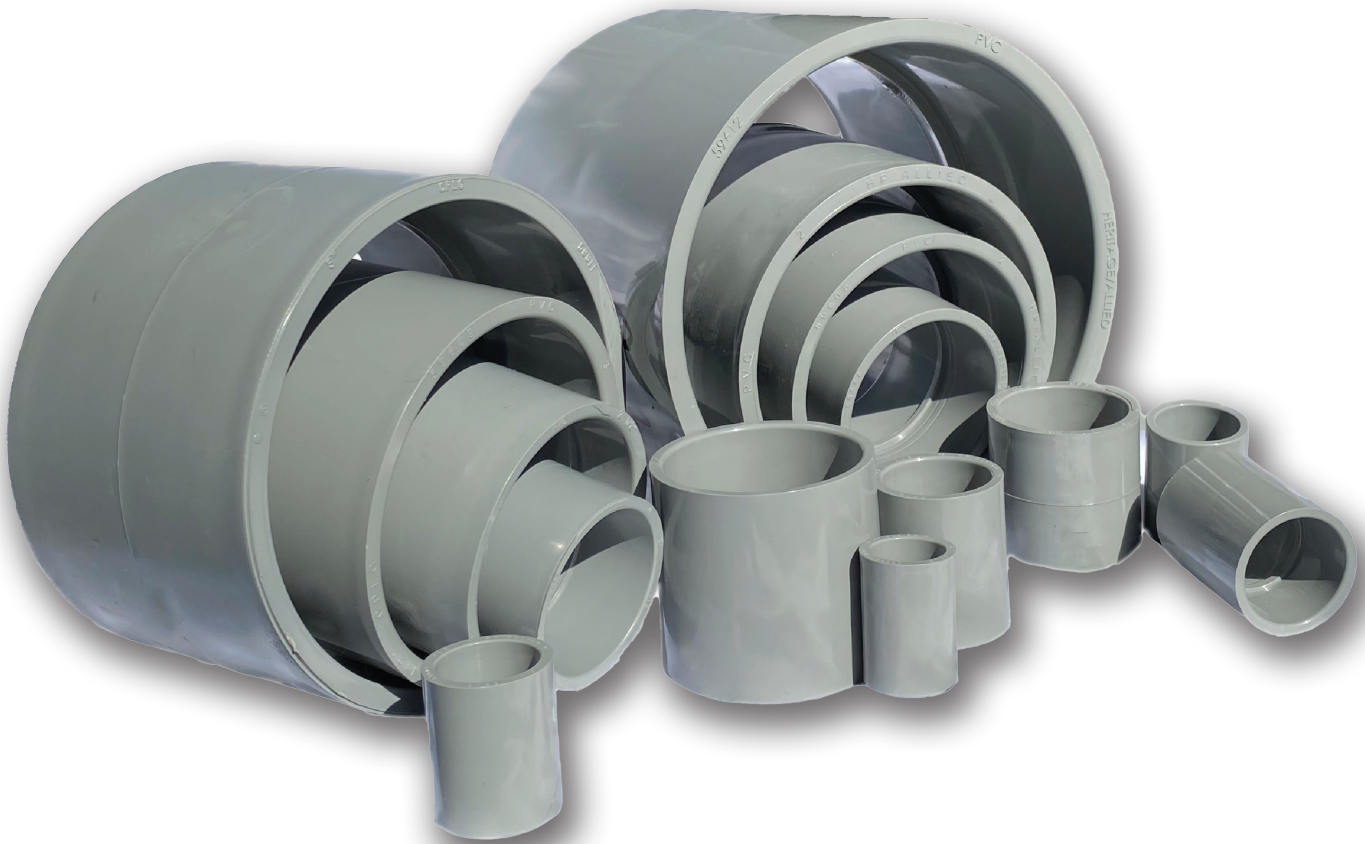


About Heritage

Heritage Plastics offers a complete line of rigid PVC conduit, utility duct and fittings. We have an extensive national manufacturing network in the industry which enables us to best serve our customers.

Our products have proven durable and effective for years of maintenance free performance in underground, encased and exposed applications. Heritage Plastics is vigilant about high quality and innovation to bring our customers the top products on the market.

The right people, the right products, the right places



Special orders are non cancelable, refundable or returnable



What are typical applications?

- Commercial and Industrial
- Transportation and Highway
- Airports and Marinas
- Cable, Data and Communication Lines
- Utilities

What are advantages of PVC Pipe?

- Corrosion Resistant
- Long Life
- Impact Resistant
- Labor Savings
- Lightweight
- Non Magnetic
- Self Extinguishing
- Non Galvanic



What determines the need for Schedule 80 conduit as opposed to Schedule 40?

In alignment with NEMA TC-2 and NEC, Section 352.10 (F), Schedule 40 and 80 can both be used in standard underground and above ground applications. Schedule 80 is designed for heavy duty applications above ground, where there are areas of potential physical damage.

Are Schedule 80 and 40 electrical conduit and fabricated fittings suited for direct sunlight?

Schedule 40 and 80 conduit and fabricated fittings are “Sunlight Resistant” in accordance with UL 651. Refer to the Atkore Sunlight Exposure Technical Bulletin on the website for additional information.

For more frequently asked questions please visit our literature web page!

atkore.com/heritageplastics/literature

Additional Website Resources

- Technical Resources
- Product Specification Sheets
- East and West truck loading charts
- New product releases and company updates

Physical Properties and Part Number Guide

Physical Properties of PVC

| Property | Unit | Value |
|---|-------------------------------|------------------------|
| Physical | | |
| Specific Gravity | -- | 1.4 - 1.6 |
| Tensile Strength | psi | 5,000 - 7,000 |
| Compressive Strength | psi | 8,500 - 9,000 |
| Flexural Strength | psi | 11,000 - 12,000 |
| Tensile Modulus | psi | 400,000 - 500,000 |
| Izod Impact Strength | [ft-lb] / inch of notch | 0.65 |
| Hardness | Durometer D | 77 |
| Thermal | | |
| Coefficient of Linear Thermal Expansion | in/(in-°F) | 3.0 x 10 ⁻⁵ |
| Deflection Temperature Under Load (264 psi) | °F | 140 - 158 |
| Thermal Conductivity | BTU-in/hr-ft ² -°F | 1.0 - 1.3 |
| Electrical | | |
| Dielectric Strength | Volts per mil | 1,100 |
| Other | | |
| Water Absorption | % max in 24 hrs at 72 °F | 0.5% |
| Flammability | -- | Self-extinguishing |

Note: Values shown are approximate (typical) and are provided for informational use only

Part Number Guide

| Rigid PVC Pipe | Fittings | Fittings - Elbows |
|---|--|--|
| <p>Schedule 40 ½-inch 10' Conduit</p> <p>4005010</p> <p>Schedule Trade Size Length in Feet</p> | <p>4" Coupling</p> <p>CP40</p> <p>Product Trade Size</p> | <p>Schedule 40 2" x 90 x 36" Plain End Special Radius Elbow F402009036P</p> <p>F402009036P</p> <p>Schedule Trade Size Degree Radius Plain End</p> |

Schedule 40 and 80 Rigid PVC Conduit



Rated for use with 90 degree C wiring
Sunlight resistant per UL 651
Conforms to UL 651 and NEMA TC 2

| Trade Size | Part Number | | Dimensions (in) | | Crate Quantity (ft) | |
|--------------------|-------------|---------|--------------------------|------------------------|---------------------|---------|
| | 10 Foot | 20 Foot | Average Outside Diameter | Minimum Wall Thickness | 10 Foot | 20 Foot |
| Schedule 40 | | | | | | |
| ½ | 4005010 | 4005020 | 0.840 | 0.109 | 6,000 | 12,000 |
| ¾ | 4007510 | 4007520 | 1.050 | 0.113 | 4,400 | 8,800 |
| 1 | 4010010 | 4010020 | 1.315 | 0.133 | 3,600 | 7,200 |
| 1¼ | 4012510 | 4012520 | 1.660 | 0.140 | 3,300 | 6,600 |
| 1½ | 4015010 | 4015020 | 1.900 | 0.145 | 2,250 | 4,500 |
| 2 | 4020010 | 4020020 | 2.375 | 0.154 | 1,400 | 2,800 |
| 2½ | 4025010 | 4025020 | 2.875 | 0.203 | 930 | 1,860 |
| 3 | 4030010 | 4030020 | 3.500 | 0.216 | 880 | 1,760 |
| 3½ | 4035010 | 4035020 | 4.000 | 0.226 | 630 | 1,260 |
| 4 | 4040010 | 4040020 | 4.500 | 0.237 | 570 | 1,140 |
| 5 | 4050010 | 4050020 | 5.563 | 0.258 | 380 | 760 |
| 6 | 4060010 | 4060020 | 6.625 | 0.280 | 260 | 520 |
| 8* | 4080010 | 4080020 | 8.625 | 0.322 | 140 | 280 |
| Schedule 80 | | | | | | |
| ½ | 8005010 | 8005020 | 0.840 | 0.147 | 6,000 | 12,000 |
| ¾ | 8007510 | 8007520 | 1.050 | 0.154 | 4,400 | 8,800 |
| 1 | 8010010 | 8010020 | 1.315 | 0.179 | 3,600 | 7,200 |
| 1¼ | 8012510 | 8012520 | 1.660 | 0.191 | 3,300 | 6,600 |
| 1½ | 8015010 | 8015020 | 1.900 | 0.200 | 2,250 | 4,500 |
| 2 | 8020010 | 8020020 | 2.375 | 0.218 | 1,400 | 2,800 |
| 2½ | 8025010 | 8025020 | 2.875 | 0.276 | 930 | 1,860 |
| 3 | 8030010 | 8030020 | 3.500 | 0.300 | 880 | 1,760 |
| 3½ | 8035010 | 8035020 | 4.000 | 0.318 | 630 | 1,260 |
| 4 | 8040010 | 8040020 | 4.500 | 0.337 | 570 | 1,140 |
| 5 | 8050010 | 8050020 | 5.563 | 0.375 | 380 | 760 |
| 6 | 8060010 | 8060020 | 6.625 | 0.432 | 260 | 520 |
| 8* | 8080010 | 8080020 | 8.625 | 0.500 | 140 | 280 |

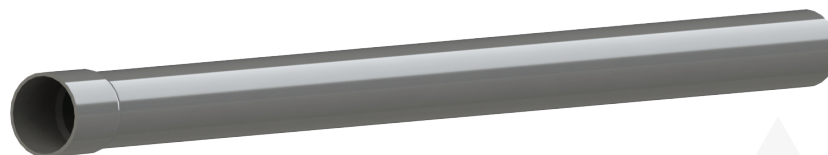
*8 inch products are not included in UL 651 and are therefore not certified by ETL
Product availability varies by region and minimum run quantities may apply



Utility Duct Rigid PVC Conduit

| Trade Size | Part Number 20 Foot | Dimensions (in) | | Crate Quantity (ft) |
|---------------|------------------------|-----------------------------|---------------------------|------------------------|
| | | Average Outside Diameter | Minimum Wall Thickness | |
| DB-60 | | | | |
| 2 | 6020020 | 2.375 | 0.060 | 2,800 |
| 3 | 6030020 | 3.500 | 0.092 | 1,760 |
| 4 | 6040020 | 4.500 | 0.121 | 1,140 |
| 5 | 6050020 | 5.563 | 0.152 | 760 |
| 6 | 6060020 | 6.625 | 0.182 | 520 |
| DB-100 | | | | |
| 3 | 1030020 | 3.500 | 0.112 | 1,760 |
| 4 | 1040020 | 4.500 | 0.145 | 1,140 |
| 5 | 1050020 | 5.563 | 0.179 | 760 |
| 6 | 1060020 | 6.625 | 0.213 | 520 |
| DB-120 | | | | |
| 1 | 1210020 | 1.315 | 0.060 | 7,200 |
| 1½ | 1215020 | 1.900 | 0.060 | 4,500 |
| 2 | 1220020 | 2.375 | 0.077 | 2,800 |
| 3 | 1230020 | 3.500 | 0.118 | 1,760 |
| 4 | 1240020 | 4.500 | 0.154 | 1,140 |
| 5 | 1250020 | 5.563 | 0.191 | 760 |
| 6 | 1260020 | 6.625 | 0.227 | 520 |

If you don't see the product you require, please call for availability
 Product availability varies by region and minimum run quantities may apply
 Conforms to NEMA TC 6 & 8 and ASTM F 512



Utility/C-Duct Rigid PVC Conduit

| Trade Size | Part Number 20 Foot | Dimensions (in) | | Crate Quantity (ft) |
|--------------|------------------------|-----------------------------|---------------------------|------------------------|
| | | Average Outside Diameter | Minimum Wall Thickness | |
| EB-20 | | | | |
| 3 | 2030020 | 3.500 | 0.061 | 1,760 |
| 4 | 2040020 | 4.500 | 0.082 | 1,140 |
| 5 | 2050020 | 5.563 | 0.103 | 760 |
| 6 | 2060020 | 6.625 | 0.125 | 520 |
| EB-35 | | | | |
| 3 | 3530020 | 3.500 | 0.076 | 1,760 |
| 4 | 3540020 | 4.500 | 0.100 | 1,140 |
| 5 | 3550020 | 5.563 | 0.126 | 760 |
| 6 | 3560020 | 6.625 | 0.152 | 520 |

Product availability varies by region and minimum run quantities may apply
EB products conform to NEMA TC 6 & 8 and ASTM F 512

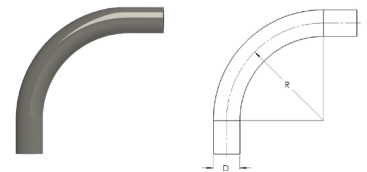
| Trade Size | Part Number 20 Foot | Dimensions (in) | | Crate Quantity (ft) |
|---------------|------------------------|-----------------------------|---------------------------|------------------------|
| | | Average Outside Diameter | Minimum Wall Thickness | |
| C-Duct | | | | |
| 4 (white) | 9040020WHT | 4.350 | 0.140 | 1,260 |
| 4 (gray) | 9040020 | 4.350 | 0.140 | 1,260 |

C-Duct compliance with CAO-8546 varies by region

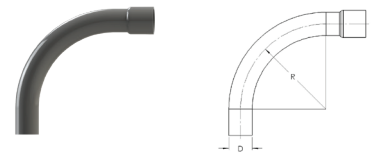


Schedule 40 Standard Radius Elbows

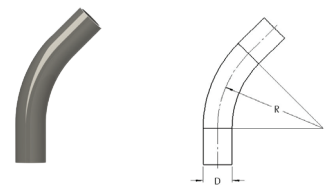
| Trade Size | Part Number | | Dimensions (in) | | Package Quantity |
|------------|-------------|----------|-----------------------------|----------|------------------|
| | Plain End | Bell End | Average Outside Diameter, D | Radius R | |
| 90° | | | | | |
| 1/2 | F4005090P | F4005090 | 0.840 | 4.00 | 50 |
| 3/4 | F4007590P | F4007590 | 1.050 | 4.50 | 25 |
| 1 | F4010090P | F4010090 | 1.315 | 5.75 | 25 |
| 1 1/4 | F4012590P | F4012590 | 1.660 | 7.25 | 25 |
| 1 1/2 | F4015090P | F4015090 | 1.900 | 8.25 | 25 |
| 2 | F4020090P | F4020090 | 2.375 | 9.50 | 25 |
| 2 1/2 | F4025090P | F4025090 | 2.875 | 10.50 | 50 |
| 3 | F4030090P | F4030090 | 3.500 | 13.00 | 50 |
| 3 1/2 | F4035090P | F4035090 | 4.000 | 15.00 | 25 |
| 4 | F4040090P | F4040090 | 4.500 | 16.00 | 25 |
| 5 | F4050090P | F4050090 | 5.563 | 24.00 | 20 |
| 6 | F4060090P | F4060090 | 6.625 | 30.00 | 16 |
| 45° | | | | | |
| 1/2 | F4005045P | F4005045 | 0.840 | 4.00 | 50 |
| 3/4 | F4007545P | F4007545 | 1.050 | 4.50 | 25 |
| 1 | F4010045P | F4010045 | 1.315 | 5.75 | 25 |
| 1 1/4 | F4012545P | F4012545 | 1.660 | 7.25 | 25 |
| 1 1/2 | F4015045P | F4015045 | 1.900 | 8.25 | 25 |
| 2 | F4020045P | F4020045 | 2.375 | 9.50 | 25 |
| 2 1/2 | F4025045P | F4025045 | 2.875 | 10.50 | 50 |
| 3 | F4030045P | F4030045 | 3.500 | 13.00 | 50 |
| 3 1/2 | F4035045P | F4035045 | 4.000 | 15.00 | 25 |
| 4 | F4040045P | F4040045 | 4.500 | 16.00 | 25 |
| 5 | F4050045P | F4050045 | 5.563 | 24.00 | 20 |
| 6 | F4060045P | F4060045 | 6.625 | 30.00 | 16 |



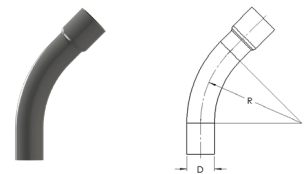
90° Plain End



90° Bell End



45° Plain End

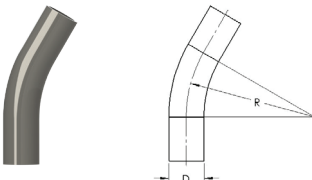
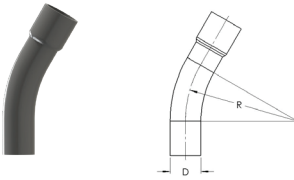
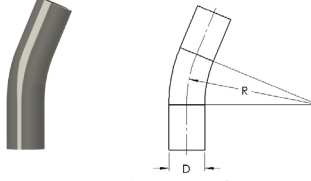
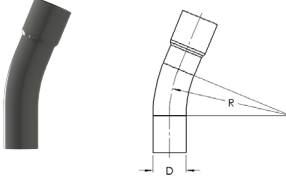


45° Bell End

Product availability varies by region and minimum run quantities may apply
Listed to UL 651



Schedule 40 Standard Radius Elbows

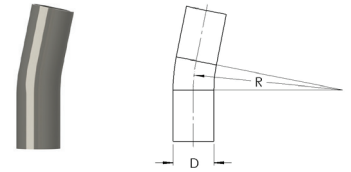
| | Trade Size | Part Number | | Dimensions (in) | | Package Quantity |
|---|-------------|-------------|----------|-----------------------------|----------|------------------|
| | | Plain End | Bell End | Average Outside Diameter, D | Radius R | |
| 30° | | | | | | |
|  <p>30° Plain End</p> | 3/4 | F4007530P | F4007530 | 1.050 | 4.50 | 25 |
| | 1 | F4010030P | F4010030 | 1.315 | 5.75 | 25 |
| | 1¼ | F4012530P | F4012530 | 1.660 | 7.25 | 25 |
| | 1½ | F4015030P | F4015030 | 1.900 | 8.25 | 25 |
| | 2 | F4020030P | F4020030 | 2.375 | 9.50 | 25 |
| | 2½ | F4025030P | F4025030 | 2.875 | 10.50 | 20 |
|  <p>30° Bell End</p> | 3 | F4030030P | F4030030 | 3.500 | 13.00 | 50 |
| | 3½ | F4035030P | F4035030 | 4.000 | 15.00 | 25 |
| | 4 | F4040030P | F4040030 | 4.500 | 16.00 | 25 |
| | 5 | F4050030P | F4050030 | 5.563 | 24.00 | 20 |
| | 6 | F4060030P | F4060030 | 6.625 | 30.00 | 16 |
| | 22½° | | | | | |
|  <p>22½° Plain End</p> | 3/4 | F4007522P | F4007522 | 1.050 | 4.50 | 25 |
| | 1 | F4010022P | F4010022 | 1.315 | 5.75 | 25 |
| | 1¼ | F4012522P | F4012522 | 1.660 | 7.25 | 25 |
| | 1½ | F4015022P | F4015022 | 1.900 | 8.25 | 25 |
| | 2 | F4020022P | F4020022 | 2.375 | 9.50 | 25 |
| | 2½ | F4025022P | F4025022 | 2.875 | 10.50 | 20 |
|  <p>22½° Bell End</p> | 3 | F4030022P | F4030022 | 3.500 | 13.00 | 50 |
| | 3½ | F4035022P | F4035022 | 4.000 | 15.00 | 25 |
| | 4 | F4040022P | F4040022 | 4.500 | 16.00 | 25 |
| | 5 | F4050022P | F4050022 | 5.563 | 24.00 | 20 |
| | 6 | F4060022P | F4060022 | 6.625 | 30.00 | 16 |

Product availability varies by region and minimum run quantities may apply
Listed to UL 651

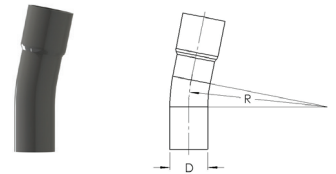


Schedule 40 Standard Radius Elbows

| Trade Size | Part Number | | Dimensions (in) | | Package Quantity |
|-------------|-------------|----------|-----------------------------|----------|------------------|
| | Plain End | Bell End | Average Outside Diameter, D | Radius R | |
| 11¼° | | | | | |
| ¾ | F4007511P | F4007511 | 1.050 | 4.50 | 25 |
| 1 | F4010011P | F4010011 | 1.315 | 5.75 | 25 |
| 1¼ | F4012511P | F4012511 | 1.660 | 7.25 | 25 |
| 1½ | F4015011P | F4015011 | 1.900 | 8.25 | 25 |
| 2 | F4020011P | F4020011 | 2.375 | 9.50 | 25 |
| 2½ | F4025011P | F4025011 | 2.875 | 10.50 | 20 |
| 3 | F4030011P | F4030011 | 3.500 | 13.00 | 50 |
| 3½ | F4035011P | F4035011 | 4.000 | 15.00 | 25 |
| 4 | F4040011P | F4040011 | 4.500 | 16.00 | 25 |
| 5 | F4050011P | F4050011 | 5.563 | 24.00 | 20 |
| 6 | F4060011P | F4060011 | 6.625 | 30.00 | 16 |



11¼° Plain End

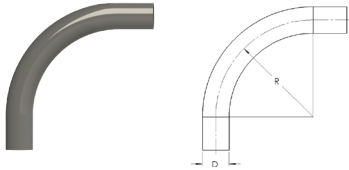
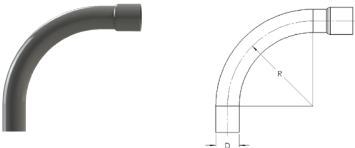
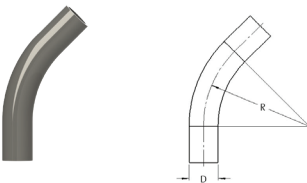
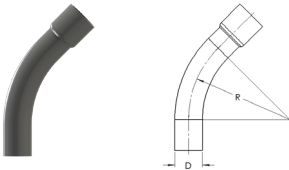


11¼° Bell End

Product availability varies by region and minimum run quantities may apply
Listed to UL 651



Schedule 80 Standard Radius Elbows

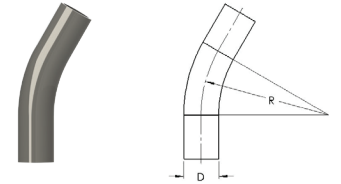
| Trade Size | Part Number | | Dimensions (in) | | Package Quantity | |
|--|-------------|-----------|-----------------------------|----------|------------------|----|
| | Plain End | Bell End | Average Outside Diameter, D | Radius R | | |
| 90° | | | | | | |
|  <p>90° Plain End</p>  <p>90° Bell End</p> | 1/2 | F8005090P | F8005090 | 0.840 | 4.00 | 50 |
| | 3/4 | F8007590P | F8007590 | 1.050 | 4.50 | 25 |
| | 1 | F8010090P | F8010090 | 1.315 | 5.75 | 25 |
| | 1 1/4 | F8012590P | F8012590 | 1.660 | 7.25 | 25 |
| | 1 1/2 | F8015090P | F8015090 | 1.900 | 8.25 | 25 |
| | 2 | F8020090P | F8020090 | 2.375 | 9.50 | 25 |
| | 2 1/2 | F8025090P | F8025090 | 2.875 | 10.50 | 50 |
| | 3 | F8030090P | F8030090 | 3.500 | 13.00 | 50 |
| | 3 1/2 | F8035090P | F8035090 | 4.000 | 15.00 | 25 |
| | 4 | F8040090P | F8040090 | 4.500 | 16.00 | 25 |
| 5 | F8050090P | F8050090 | 5.563 | 24.00 | 20 | |
| 6 | F8060090P | F8060090 | 6.625 | 30.00 | 16 | |
| 45° | | | | | | |
|  <p>45° Plain End</p>  <p>45° Bell End</p> | 1/2 | F8005045P | F8005045 | 0.840 | 4.00 | 50 |
| | 3/4 | F8007545P | F8007545 | 1.050 | 4.50 | 25 |
| | 1 | F8010045P | F8010045 | 1.315 | 5.75 | 25 |
| | 1 1/4 | F8012545P | F8012545 | 1.660 | 7.25 | 25 |
| | 1 1/2 | F8015045P | F8015045 | 1.900 | 8.25 | 25 |
| | 2 | F8020045P | F8020045 | 2.375 | 9.50 | 25 |
| | 2 1/2 | F8025045P | F8025045 | 2.875 | 10.50 | 50 |
| | 3 | F8030045P | F8030045 | 3.500 | 13.00 | 50 |
| | 3 1/2 | F8035045P | F8035045 | 4.000 | 15.00 | 25 |
| | 4 | F8040045P | F8040045 | 4.500 | 16.00 | 25 |
| 5 | F8050045P | F8050045 | 5.563 | 24.00 | 20 | |
| 6 | F8060045P | F8060045 | 6.625 | 30.00 | 16 | |

Product availability varies by region and minimum run quantities may apply
Listed to UL 651

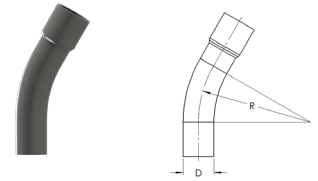


Schedule 80 Standard Radius Elbows

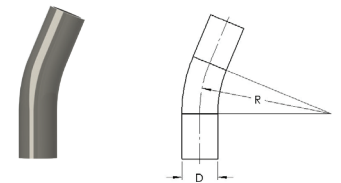
| Trade Size | Part Number | | Dimensions (in) | | Package Quantity |
|-------------|-------------|----------|-----------------------------|----------|------------------|
| | Plain End | Bell End | Average Outside Diameter, D | Radius R | |
| 30° | | | | | |
| ¾ | F8007530P | F8007530 | 1.050 | 4.50 | 25 |
| 1 | F8010030P | F8010030 | 1.315 | 5.75 | 25 |
| 1¼ | F8012530P | F8012530 | 1.660 | 7.25 | 25 |
| 1½ | F8015030P | F8015030 | 1.900 | 8.25 | 25 |
| 2 | F8020030P | F8020030 | 2.375 | 9.50 | 25 |
| 2½ | F8025030P | F8025030 | 2.875 | 10.50 | 20 |
| 3 | F8030030P | F8030030 | 3.500 | 13.00 | 50 |
| 3½ | F8035030P | F8035030 | 4.000 | 15.00 | 25 |
| 4 | F8040030P | F8040030 | 4.500 | 16.00 | 25 |
| 5 | F8050030P | F8050030 | 5.563 | 24.00 | 20 |
| 6 | F8060030P | F8060030 | 6.625 | 30.00 | 16 |
| 22½° | | | | | |
| ¾ | F8007522P | F8007522 | 1.050 | 4.50 | 25 |
| 1 | F8010022P | F8010022 | 1.315 | 5.75 | 25 |
| 1¼ | F8012522P | F8012522 | 1.660 | 7.25 | 25 |
| 1½ | F8015022P | F8015022 | 1.900 | 8.25 | 25 |
| 2 | F8020022P | F8020022 | 2.375 | 9.50 | 25 |
| 2½ | F8025022P | F8025022 | 2.875 | 10.50 | 20 |
| 3 | F8030022P | F8030022 | 3.500 | 13.00 | 50 |
| 3½ | F8035022P | F8035022 | 4.000 | 15.00 | 25 |
| 4 | F8040022P | F8040022 | 4.500 | 16.00 | 25 |
| 5 | F8050022P | F8050022 | 5.563 | 24.00 | 20 |
| 6 | F8060022P | F8060022 | 6.625 | 30.00 | 16 |



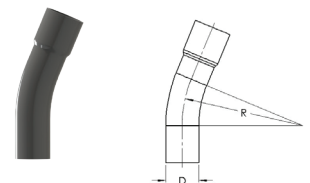
30° Plain End



30° Bell End



22½° Plain End

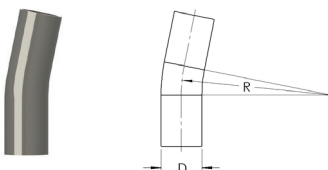
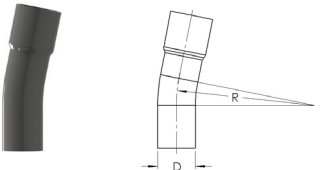


22½° Bell End

Product availability varies by region and minimum run quantities may apply
Listed to UL 651



Schedule 80 Standard Radius Elbows

| | Trade Size | Part Number | | Dimensions (in) | | Package Quantity |
|---|------------|-------------|----------|-----------------------------|----------|------------------|
| | | Plain End | Bell End | Average Outside Diameter, D | Radius R | |
| 11¼° | | | | | | |
|  <p>11¼° Plain End</p> | ¾ | F8007511P | F8007511 | 1.050 | 4.50 | 25 |
| | 1 | F8010011P | F8010011 | 1.315 | 5.75 | 25 |
| | 1¼ | F8012511P | F8012511 | 1.660 | 7.25 | 25 |
| | 1½ | F8015011P | F8015011 | 1.900 | 8.25 | 25 |
| | 2 | F8020011P | F8020011 | 2.375 | 9.50 | 25 |
| | 2½ | F8025011P | F8025011 | 2.875 | 10.50 | 20 |
|  <p>11¼° Bell End</p> | 3 | F8030011P | F8030011 | 3.500 | 13.00 | 50 |
| | 3½ | F8035011P | F8035011 | 4.000 | 15.00 | 25 |
| | 4 | F8040011P | F8040011 | 4.500 | 16.00 | 25 |
| | 5 | F8050011P | F8050011 | 5.563 | 24.00 | 20 |
| | 6 | F8060011P | F8060011 | 6.625 | 30.00 | 16 |

Product availability varies by region and minimum run quantities may apply
Listed to UL 651



Schedule 40 Plain End Special Radius Elbows

| Trade Size | Part Number | | | | | | Package Quantity |
|------------|-------------|-------------|-------------|-------------|-------------|-------------|------------------|
| | 18" Radius | 24" Radius | 30" Radius | 36" Radius | 48" Radius | 60" Radius | |
| 90° | | | | | | | |
| 1 | F401009018P | F401009024P | F401009030P | F401009036P | F401009048P | F401009060P | 25 |
| 1¼ | F401259018P | F401259024P | F401259030P | F401259036P | F401259048P | F401259060P | 25 |
| 1½ | F401509018P | F401509024P | F401509030P | F401509036P | F401509048P | F401509060P | 25 |
| 2 | F402009018P | F402009024P | F402009030P | F402009036P | F402009048P | F402009060P | 50 |
| 2½ | F402509018P | F402509024P | F402509030P | F402509036P | F402509048P | F402509060P | 50 |
| 3 | F403009018P | F403009024P | F403009030P | F403009036P | F403009048P | F403009060P | 50 |
| 3½ | F403509018P | F403509024P | F403509030P | F403509036P | F403509048P | F403509060P | 25 |
| 4 | F404009018P | F404009024P | F404009030P | F404009036P | F404009048P | F404009060P | 25 |
| 5 | - | F4050090P | F405009030P | F405009036P | F405009048P | F405009060P | 20 |
| 6 | - | - | F4060090P | F406009036P | F406009048P | F406009060P | 16 |
| 45° | | | | | | | |
| 1 | F401004518P | F401004524P | F401004530P | F401004536P | F401004548P | F401004560P | 25 |
| 1¼ | F401254518P | F401254524P | F401254530P | F401254536P | F401254548P | F401254560P | 25 |
| 1½ | F401504518P | F401504524P | F401504530P | F401504536P | F401504548P | F401504560P | 25 |
| 2 | F402004518P | F402004524P | F402004530P | F402004536P | F402004548P | F402004560P | 50 |
| 2½ | F402504518P | F402504524P | F402504530P | F402504536P | F402504548P | F402504560P | 50 |
| 3 | F403004518P | F403004524P | F403004530P | F403004536P | F403004548P | F403004560P | 50 |
| 3½ | F403504518P | F403504524P | F403504530P | F403504536P | F403504548P | F403504560P | 25 |
| 4 | F404004518P | F404004524P | F404004530P | F404004536P | F404004548P | F404004560P | 25 |
| 5 | - | F4050045P | F405004530P | F405004536P | F405004548P | F405004560P | 20 |
| 6 | - | - | F4060045P | F406004536P | F406004548P | F406004560P | 16 |

Call for availability on 30°, 22½° and 11¼° special radius elbows
Product availability varies by region and minimum run quantities may apply
Listed to UL 651



Schedule 40 Bell End Special Radius Elbows

| Trade Size | Part Number | | | | | | Package Quantity |
|------------|-------------|------------|------------|------------|------------|------------|------------------|
| | 18" Radius | 24" Radius | 30" Radius | 36" Radius | 48" Radius | 60" Radius | |
| 90° | | | | | | | |
| 1 | F401009018 | F401009024 | F401009030 | F401009036 | F401009048 | F401009060 | 25 |
| 1¼ | F401259018 | F401259024 | F401259030 | F401259036 | F401259048 | F401259060 | 25 |
| 1½ | F401509018 | F401509024 | F401509030 | F401509036 | F401509048 | F401509060 | 25 |
| 2 | F402009018 | F402009024 | F402009030 | F402009036 | F402009048 | F402009060 | 50 |
| 2½ | F402509018 | F402509024 | F402509030 | F402509036 | F402509048 | F402509060 | 50 |
| 3 | F403009018 | F403009024 | F403009030 | F403009036 | F403009048 | F403009060 | 50 |
| 3½ | F403509018 | F403509024 | F403509030 | F403509036 | F403509048 | F403509060 | 25 |
| 4 | F404009018 | F404009024 | F404009030 | F404009036 | F404009048 | F404009060 | 25 |
| 5 | - | F4050090 | F405009030 | F405009036 | F405009048 | F405009060 | 20 |
| 6 | - | - | F4060090 | F406009036 | F406009048 | F406009060 | 16 |
| 45° | | | | | | | |
| 1 | F401004518 | F401004524 | F401004530 | F401004536 | F401004548 | F401004560 | 25 |
| 1¼ | F401254518 | F401254524 | F401254530 | F401254536 | F401254548 | F401254560 | 25 |
| 1½ | F401504518 | F401504524 | F401504530 | F401504536 | F401504548 | F401504560 | 25 |
| 2 | F402004518 | F402004524 | F402004530 | F402004536 | F402004548 | F402004560 | 50 |
| 2½ | F402504518 | F402504524 | F402504530 | F402504536 | F402504548 | F402504560 | 50 |
| 3 | F403004518 | F403004524 | F403004530 | F403004536 | F403004548 | F403004560 | 50 |
| 3½ | F403504518 | F403504524 | F403504530 | F403504536 | F403504548 | F403504560 | 25 |
| 4 | F404004518 | F404004524 | F404004530 | F404004536 | F404004548 | F404004560 | 25 |
| 5 | - | F4050045 | F405004530 | F405004536 | F405004548 | F405004560 | 20 |
| 6 | - | - | F4060045 | F406004536 | F406004548 | F406004560 | 16 |

Call for availability on 30°, 22½° and 11¼° special radius elbows
 Product availability varies by region and minimum run quantities may apply
 Listed to UL 651



Schedule 80 Special Radius Elbows

| Trade Size | Part Number | | | Package Quantity |
|----------------------|-------------|-------------|-------------|------------------|
| | 24" Radius | 36" Radius | 48" Radius | |
| Plain End 90° | | | | |
| 2 | F802009024P | F802009036P | F802009048P | 50 |
| 2½ | F802509024P | F802509036P | F802509048P | 50 |
| 3 | F803009024P | F803009036P | F803009048P | 50 |
| 4 | F804009024P | F804009036P | F804009048P | 25 |
| 5 | F8050090P | F805009036P | F805009048P | 20 |
| 6 | - | F806009036P | F806009048P | 16 |
| Plain End 45° | | | | |
| 2 | F802004524P | F802004536P | F802004548P | 50 |
| 2½ | F802504524P | F802504536P | F802504548P | 50 |
| 3 | F803004524P | F803004536P | F803004548P | 50 |
| 4 | F804004524P | F804004536P | F804004548P | 25 |
| 5 | F8050045P | F805004536P | F805004548P | 20 |
| 6 | - | F806004536P | F806004548P | 16 |
| Bell End 90° | | | | |
| 2 | F802009024 | F802009036 | F802009048 | 50 |
| 2½ | F802509024 | F802509036 | F802509048 | 50 |
| 3 | F803009024 | F803009036 | F803009048 | 50 |
| 4 | F804009024 | F804009036 | F804009048 | 25 |
| 5 | F8050090 | F805009036 | F805009048 | 20 |
| 6 | - | F806009036 | F806009048 | 16 |
| Bell End 45° | | | | |
| 2 | F802004524 | F802004536 | F802004548 | 50 |
| 2½ | F802504524 | F802504536 | F802504548 | 50 |
| 3 | F803004524 | F803004536 | F803004548 | 50 |
| 4 | F804004524 | F804004536 | F804004548 | 25 |
| 5 | F8050045 | F805004536 | F805004548 | 20 |
| 6 | - | F806004536 | F806004548 | 16 |

Call for availability on 30°, 22½° and 11¼° special radius elbows
Product availability varies by region and minimum run quantities may apply
Listed to UL 651



Utility/C-Duct Special Radius Elbows

Utility Duct

| Trade Size | Part Number | | | | Package Quantity |
|-------------|-------------|------------|------------|------------|------------------|
| | 24" Radius | 36" Radius | 48" Radius | 60" Radius | |
| 90° | | | | | |
| 1 | F121009024 | F121009036 | F121009048 | F121009060 | 25 |
| 2 | F122009024 | F122009036 | F122009048 | F122009060 | 50 |
| 3 | F123009024 | F123009036 | F123009048 | F123009060 | 50 |
| 4 | F124009024 | F124009036 | F124009048 | F124009060 | 25 |
| 5 | F125009024 | F125009036 | F125009048 | F125009060 | 20 |
| 6 | - | F126009036 | F126009048 | F126009060 | 16 |
| 45° | | | | | |
| 1 | F121004524 | F121004536 | F121004548 | F121004560 | 25 |
| 2 | F122004524 | F122004536 | F122004548 | F122004560 | 50 |
| 3 | F123004524 | F123004536 | F123004548 | F123004560 | 50 |
| 4 | F124004524 | F124004536 | F124004548 | F124004560 | 25 |
| 5 | F125004524 | F125004536 | F125004548 | F125004560 | 20 |
| 6 | - | F126004536 | F126004548 | F126004560 | 16 |
| 22½° | | | | | |
| 1 | F121002224 | F121002236 | F121002248 | F121002260 | 25 |
| 2 | F122002224 | F122002236 | F122002248 | F122002260 | 50 |
| 3 | F123002224 | F123002236 | F123002248 | F123002260 | 50 |
| 4 | F124002224 | F124002236 | F124002248 | F124002260 | 25 |
| 5 | F125002224 | F125002236 | F125002248 | F125002260 | 20 |
| 6 | - | F126002236 | F126002248 | F126002260 | 16 |

Sweeps made from DB120, but can be used with any EB or DB duct

4" C-Duct

| Degree | Part Number | | | | Package Quantity |
|--------|-------------|------------|------------|------------|------------------|
| | 24" Radius | 36" Radius | 48" Radius | 60" Radius | |
| 11¼° | F904001124 | F904001136 | F904001148 | F904001160 | 25 |
| 22½° | F904002224 | F904002236 | F904002248 | F904002260 | 25 |
| 45° | F904004524 | F904004536 | F904004548 | F904004560 | 25 |
| 90° | F904009024 | F904009036 | F904009048 | F904009060 | 25 |

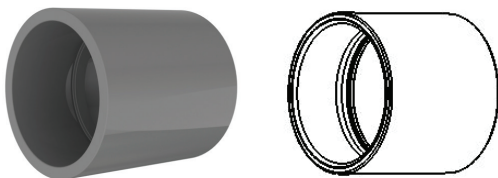
If you don't see the product you require, please call for availability
Product availability varies by region and minimum run quantities may apply



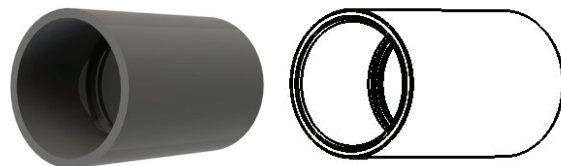
Couplings

| Trade Size | Part Number | Package Quantity |
|----------------------------|-------------|------------------|
| Couplings | | |
| ½ | CP05 | 200 |
| ¾ | CP07 | 125 |
| 1 | CP10 | 70 |
| 1¼ | CP12 | 40 |
| 1½ | CP15 | 30 |
| 2 | CP20 | 40 |
| 2½ | CP25 | 20 |
| 3 | CP30 | 40 |
| 3½ | CP35 | 30 |
| 4 | CP40 | 20 |
| 5 | CP50 | 10 |
| 6 | CP60 | 8 |
| 8* | CP80 | 1 |
| Long Line Couplings | | |
| 1½ | LLC15 | 25 |
| 2 | LLC20 | 20 |
| 2½ | LLC25 | 25 |
| 3 | LLC30 | 25 |
| 4 | LLC40 | 15 |
| 5 | LLC50 | 8 |
| 6 | LLC60 | 4 |

*8 inch products are not included in UL 651
Conforms to NEMA TC-3



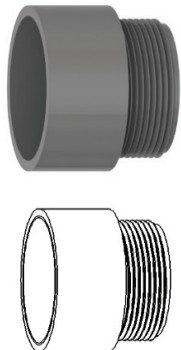
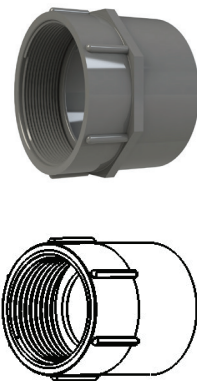
Coupling
Listed to UL 651



Long Line Coupling

Product appearance
may vary by region

Adapters

| | Trade Size | Part Number | Package Quantity |
|--|------------|-------------|------------------|
| Terminal Adapters | | | |
|  <p>Terminal Adapters</p> | ½ | TA05 | 200 |
| | ¾ | TA07 | 125 |
| | 1 | TA10 | 70 |
| | 1¼ | TA12 | 40 |
| | 1½ | TA15 | 30 |
| | 2 | TA20 | 40 |
| | 2½ | TA25 | 20 |
| | 3 | TA30 | 40 |
| | 3½ | TA35 | 30 |
| | 4 | TA40 | 20 |
| | 5 | TA50 | 10 |
| | 6 | TA60 | 8 |
| 8* | TA80 | 2 | |
| Female Adapters | | | |
|  <p>Female Adapters</p> | ½ | FA05 | 200 |
| | ¾ | FA07 | 125 |
| | 1 | FA10 | 70 |
| | 1¼ | FA12 | 40 |
| | 1½ | FA15 | 30 |
| | 2 | FA20 | 40 |
| | 2½ | FA25 | 20 |
| | 3 | FA30 | 40 |
| | 3½ | FA35 | 30 |
| | 4 | FA40 | 20 |
| | 5 | FA50 | 10 |
| | 6 | FA60 | 8 |
| 8* | FA80 | 2 | |

*8 inch products are not included in UL 651



Expansion Couplings and Repair Sleeve Couplings

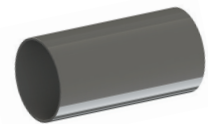
| Trade Size | Part Number | Package Quantity |
|--------------------------------------|-------------|------------------|
| One Piece Expansion Couplings | | |
| ½ | EJ-105 | 80 |
| ¾ | EJ-107 | 50 |
| 1 | EJ-110 | 50 |
| 1¼ | EJ-112 | 25 |
| 1½ | EJ-115 | 25 |
| 2 | EJ-120 | 10 |
| Two Piece Expansion Couplings | | |
| ½ | EJ05 | 25 |
| ¾ | EJ07 | 25 |
| 1 | EJ10 | 40 |
| 1¼ | EJ12 | 20 |
| 1½ | EJ15 | 20 |
| 2 | EJ20 | 10 |
| 2½ | EJ25 | 9 |
| 3 | EJ30 | 9 |
| 3½ | EJ35 | 5 |
| 4 | EJ40 | 5 |
| 5 | EJ50 | 1 |
| 6 | EJ60 | 1 |
| Repair Sleeve Couplings | | |
| 1 | 40REC10 | 50 |
| 1¼ | 40REC12 | 50 |
| 1½ | 40REC15 | 50 |
| 2 | 40REC20 | 50 |
| 2½ | 40REC25 | 30 |
| 3 | 40REC30 | 30 |
| 4 | 40REC40 | 30 |
| 5 | 40REC50 | 15 |
| 6 | 40REC60 | 10 |



Expansion Coupling
One Piece



Expansion Coupling
Two Piece



Repair Sleeve Coupling

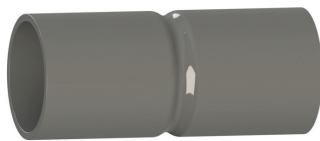
Product availability may vary by region

Swedge Couplings and Swedge Reducers

Swedge Couplings

| Trade Size | Part Number | Package Quantity |
|--------------------|-------------|------------------|
| DB | | |
| 1½ | 60SWC15 | 50 |
| 2 | 60SWC20 | 50 |
| 3 | 60SWC30 | 30 |
| 4 | 60SWC40 | 30 |
| 5 | 60SWC50 | 15 |
| 6 | 60SWC60 | 10 |
| Schedule 40 | | |
| 1 | 40SWC10 | 50 |
| 1¼ | 40SWC12 | 50 |
| 1½ | 40SWC15 | 50 |
| 2 | 40SWC20 | 50 |
| 2½ | 40SWC25 | 30 |
| 3 | 40SWC30 | 30 |
| 4 | 40SWC40 | 30 |
| 5 | 40SWC50 | 15 |
| 6 | 40SWC60 | 10 |
| 8 | 40SWC80 | 6 |
| Schedule 80 | | |
| 2 | 80SWC20 | 50 |
| 3 | 80SWC30 | 30 |
| C-Duct | | |
| 4 C-Duct to 4 Duct | C60SWC40 | 30 |
| 4 | CSWC40 | 30 |

Product availability may vary by region

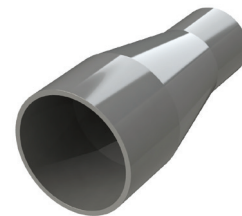


Swedge Coupling

Swedge Reducers Spigot x Spigot

| Trade Size | Part Number | Package Quantity |
|--------------------|-------------|------------------|
| DB | | |
| 2½ x 2 | 60SW2520SS | 100 |
| 3 x 2 | 60SW3020SS | 80 |
| 3 x 2½ | 60SW3025SS | 80 |
| 4 x 3 | 60SW4030SS | 60 |
| 5 x 4 | 60SW5040SS | 36 |
| 6 x 5 | 60SW6050SS | 36 |
| Schedule 40 | | |
| 1 ½ x 1 | 40SW1510SS | 25 |
| 2 x 1½ | 40SW2015SS | 25 |
| 2½ x 2 | 40SW2520SS | 80 |
| 3 x 2 | 40SW3020SS | 80 |
| 3 x 2½ | 40SW3025SS | 80 |
| 4 x 3 | 40SW4030SS | 60 |
| 5 x 4 | 40SW5040SS | 36 |
| 6 x 5 | 40SW6050SS | 36 |
| Schedule 80 | | |
| 3 x 2 | 80SW3020SS | 80 |
| 4 x 3 | 80SW4030SS | 60 |
| 5 x 4 | 80SW5040SS | 36 |

Product availability may vary by region



Swedge Reducer Spigot x Spigot

5° Couplings and Meter Risers

5° Couplings

| Trade Size | Part Number | | Package Quantity |
|--------------------|-------------|---------------|------------------|
| | Bell x Bell | Bell x Spigot | |
| DB | | | |
| 3 | 605EC30BB | 605EC30BS | 30 |
| 4 | 605EC40BB | 605EC40BS | 30 |
| 5 | 605EC50BB | 605EC50BS | 15 |
| 6 | 605EC60BB | 605EC60BS | 10 |
| Schedule 40 | | | |
| 2 | 405EC20BB | 405EC20BS | 50 |
| 3 | 405EC30BB | 405EC30BS | 30 |
| 4 | 405EC40BB | 405EC40BS | 30 |
| 5 | 405EC50BB | 405EC50BS | 15 |
| 6 | 405EC60BB | 405EC60BS | 10 |
| C-Duct | | | |
| 4 | C5EC40BB | C5EC40BS | 30 |

Product availability may vary by region



Bell x Bell

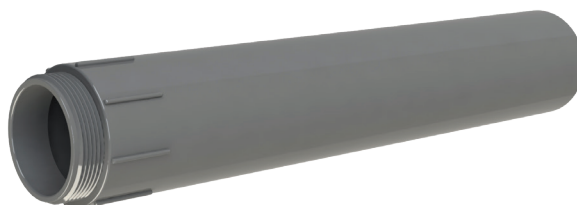


Bell x Spigot

Slip Meter Risers

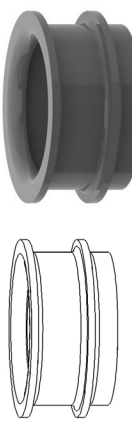
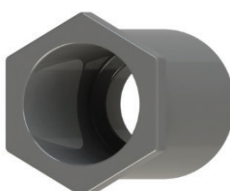
| Trade Size | Part Number | Package Quantity |
|--------------------|-------------|------------------|
| Schedule 40 | | |
| 2 | MTR40200 | 10 |
| 2½ | MTR40250 | 8 |
| 3 | MTR40300 | 5 |
| 4 | MTR40400 | 3 |

Product availability may vary by region



Meter Riser

End Bells and Reducer Bushings

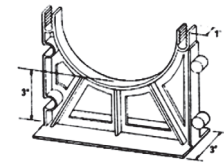
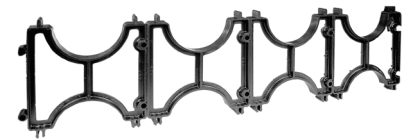
| | Trade Size | Part Number | Package Quantity |
|--|------------|-------------|------------------|
| End Bells | | | |
|  <p>End Bell</p> | ½ | MEB05 | 100 |
| | ¾ | MEB07 | 100 |
| | 1 | MEB10 | 50 |
| | 1¼ | MEB12 | 50 |
| | 1½ | MEB15 | 50 |
| | 2 | MEB20 | 40 |
| | 2½ | MEB25 | 30 |
| | 3 | MEB30 | 50 |
| | 3½ | MEB35 | 50 |
| | 4 | MEB40 | 50 |
| | 5 | MEB50 | 25 |
| | 6 | MEB60 | 15 |
| | 8 | MEB80 | 1 |
| Reducer Bushings | | | |
|  <p>Reducer Bushing</p> | ¾ x ½ | MR0705 | 100 |
| | 1 x ½ | MR1005 | 100 |
| | 1 x ¾ | MR1007 | 100 |
| | 1¼ x ¾ | MR1207 | 50 |
| | 1¼ x 1 | MR1210 | 50 |
| | 1½ x 1 | MR1510 | 50 |
| | 1½ x 1 ¼ | MR1512 | 50 |
| | 2 x 1 | MR2010 | 50 |
| | 2 x 1 ¼ | MR2012 | 25 |
| | 2 x 1 ½ | MR2015 | 25 |
| | 2½ x 2 | MR2520 | 15 |
| | 3 x 2 | MR3020 | 25 |
| | 3 x 2 ½ | MR3025 | 15 |
| | 4 x 2 | MR4020 | 10 |
| | 4 x 3 | MR4030 | 10 |
| | 4 x 3 ½ | MR4035 | 15 |

Product availability may vary by region

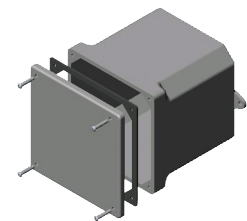


Duct Spacers and Junction Boxes

| Trade Size | Part Number | Package Quantity | Part Number | Package Quantity |
|------------|---------------------|------------------|---------------------|------------------|
| | | | | |
| 2 x 1½ | IV2015 | 350 | BV2015 | 250 |
| 2 x 2 | IV2020 | 300 | BV2020 | 225 |
| 2 x 3 | IV2030 | 200 | BV2030 | 225 |
| 3 x 1½ | IV3015 | 225 | BV3015 | 175 |
| 3 x 2 | IV3020 | 200 | BV3020 | 155 |
| 3 x 3 | IV3030 | 125 | BV3030 | 150 |
| 4 x 1 | IV4010 | 200 | BV4010 | 175 |
| 4 x 1½ | IV4015 | 150 | BV4015 | 140 |
| 4 x 2 | IV4020 | 125 | BV4020 | 140 |
| 4 x 3 | IV4030 | 90 | BV4030 | 120 |
| 5 x 1½ | IV5015 | 100 | BV5015 | 120 |
| 5 x 2 | IV5020 | 100 | BV5020 | 120 |
| 5 x 3 | IV5030 | 80 | BV5030 | 100 |
| 6 x 1½ | IV6015 | 100 | BV6015 | 100 |
| 6 x 2 | IV6020 | 90 | BV6020 | 100 |
| 6 x 3 | IV6030 | 70 | BV6030 | 95 |
| 8 x 2 | IV8020 | 60 | BV8020 | 50 |
| | Self Tapping Screws | | Brass Screw Inserts | |
| 4x4x2 | JB442S | 10 | JB442 | 15 |
| 4x4x4 | JB444S | 10 | JB444 | 10 |
| 4x4x6 | JB446S | 10 | JB446 | 8 |
| 5x5x2 | JB552S | 10 | JB552 | 12 |
| 6x6x4 | JB664S | 10 | JB664 | 15 |
| 6x6x6 | JB666S | 5 | JB666 | 4 |
| 8x8x4 | JB884S | 5 | JB884 | 4 |
| 8x8x7 | JB887S | 4 | JB887 | 4 |
| 12x12x4 | JB12124S | 2 | JB12124 | 2 |
| 12x12x6 | JB12126S | 2 | JB12126 | 4 |
| 12x12x8 | JB12128S | 3 | JB12128 | 3 |



Spacers



Junction Box

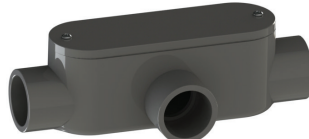
Product appearance may vary by region
Product availability may vary by region

| Trade Size | Part Number | | | | | | Package Quantity | |
|------------|-------------|-----|------|------|-----|-----|------------------|--------|
| | LB | T | LR | LL | E | C | | T Only |
| ½ | LB05 | T05 | LR05 | LL05 | E05 | C05 | 25 | 25 |
| ¾ | LB07 | T07 | LR07 | LL07 | E07 | C07 | 15 | 15 |
| 1 | LB10 | T10 | LR10 | LL10 | E10 | C10 | 10 | 10 |
| 1¼ | LB12 | T12 | LR12 | LL12 | E12 | C12 | 10 | 10 |
| 1½ | LB15 | T15 | LR15 | LL15 | E15 | C15 | 10 | 10 |
| 2 | LB20 | T20 | LR20 | LL20 | E20 | C20 | 5 | 5 |
| 2½ | LB25 | T25 | LR25 | LL25 | E25 | C25 | 5 | 2 |
| 3 | LB30 | T30 | LR30 | LL30 | E30 | C30 | 5 | 2 |
| 3½ | LB35 | T35 | LR35 | LL35 | E35 | C35 | 4 | 1 |
| 4 | LB40 | T40 | LR40 | LL40 | E40 | C40 | 4 | 1 |

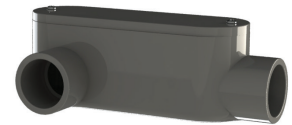
Product availability may vary by region



Type LB



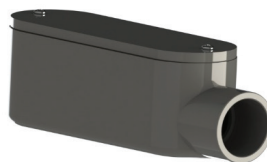
Type T



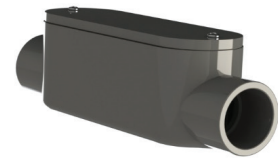
Type LR



Type LL



Type E



Type C

Accessories

| Trade Size | Part Number | Package Quantity |
|-----------------------------|-------------|------------------|
| Meter Offsets | | |
| 1¼ | MO12 | 50 |
| 2 | MO20 | 25 |
| Two Hole Pipe Straps | | |
| ½ | PS05 | 400 |
| ¾ | PS07 | 200 |
| 1 | PS10 | 200 |
| 1¼ | PS12 | 200 |
| 1½ | PS15 | 200 |
| 2 | PS20 | 200 |
| 2½ | PS25 | 100 |
| 3 | PS30 | 100 |
| 4 | PS40 | 100 |
| Pull Elbows | | |
| ½ & ¾ | PULEL0705 | 50 |
| Expandable Plugs | | |
| 2 | KW20L | 50 |
| 2½ | KW25L | 30 |
| 3 | KW30L | 30 |
| 4 | KW40L | 30 |
| 5 | KW50L | 20 |
| Temporary Plugs | | |
| 1 | UTP10 | 100 |
| 1¼ | UTP12 | 100 |
| 1½ | UTP15 | 100 |
| 2 | UTP20 | 100 |
| 2½ | UTP25 | 100 |
| 3 | UTP30 | 80 |
| 3½ | UTP35 | 80 |
| 4 | UTP40 | 50 |
| 5 | UTP50 | 40 |
| 6 | UTP60 | 30 |
| 8 | UTP80 | 12 |



Meter Offset



Two Hole Pipe Strap



Pull Elbow



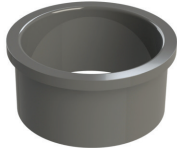


Expandable Plug



Temporary Plug

Product availability may vary by region

Accessories

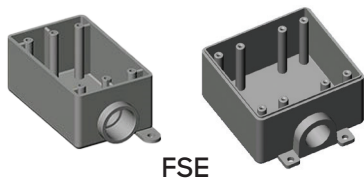
| | Trade Size | Part Number | Package Quantity |
|---|-------------------------------|-------------|------------------|
|  <p>Junction Box Adapter</p> | Junction Box Adapters | | |
| | ½ | JBA05 | 100 |
| | ¾ | JBA07 | 100 |
| | 1 | JBA10 | 100 |
| | 1¼ | JBA12 | 50 |
| | 1½ | JBA15 | 50 |
| | 2 | JBA20 | 25 |
| | 2½ | JBA25 | 10 |
| | 3 | JBA30 | 10 |
| | 3½ | JBA35 | 10 |
| 4 | JBA40 | 10 | |
|  <p>Service Entrance Head</p> | Service Entrance Heads | | |
| | ½ | MH05 | 25 |
| | ¾ | MH07 | 25 |
| | 1 | MH10 | 15 |
| | 1¼ | MH12 | 20 |
| | 1½ | MH15 | 5 |
| | 2 | MH20 | 5 |
| | 2½ | MH25 | 2 |
| | 3 | MH30 | 2 |
| | 3½ | MH35 | 2 |
| 4 | MH40 | 2 | |
|  <p>End Cap</p> | End Caps | | |
| | ½ | EC05 | 200 |
| | ¾ | EC07 | 150 |
| | 1 | EC10 | 100 |
| | 1¼ | EC12 | 40 |
| | 1½ | EC15 | 40 |
| | 2 | EC20 | 20 |
| | 2½ | EC25 | 15 |
| | 3 | EC30 | 10 |
| | 3½ | EC35 | 25 |
| | 4 | EC40 | 12 |
| | 5 | EC50 | 5 |
| | 6 | EC60 | 10 |
| 8 | EC80 | 1 | |

Product availability may vary by region

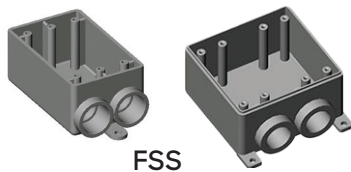
F-Series Boxes

| Type | Trade Size | Part Number | Package Quantity |
|-----------------|--------------------|---------------|------------------|
| FSE | | | |
| Single Gang | 1/2 | FSE05 | 10 |
| Single Gang | 3/4 | FSE07 | 10 |
| Single Gang | 1 | FSE10 | 10 |
| Single Gang | 1/2 - 3/4 - 1 Deep | FSED050710 | 10 |
| Double Gang | 1/2 - 3/4 - 1 | FSE-2-050710 | 5 |
| FSS | | | |
| Single Gang | 1/2 | FSS05 | 10 |
| Single Gang | 3/4 | FSS07 | 10 |
| Single Gang | 1 | FSS10 | 10 |
| Double Gang | 1/2 - 3/4 - 1 | FSS-2-050710 | 5 |
| FSC | | | |
| Single Gang | 1/2 | FSC05 | 10 |
| Single Gang | 3/4 | FSC07 | 10 |
| Single Gang | 1 | FSC10 | 10 |
| Single Gang | 1/2 - 3/4 - 1 Deep | FSCD050710 | 10 |
| Double Gang | 1/2 - 3/4 - 1 | FSC-2-050710 | 5 |
| FSCC | | | |
| Single Gang | 1/2 | FSCC05 | 10 |
| Single Gang | 3/4 | FSCC07 | 10 |
| Single Gang | 1 | FSCC10 | 10 |
| Double Gang | 1/2 - 3/4 - 1 | FSCC-2-050710 | 5 |
| FD Blank | | | |
| Single Gang | Deep | FD | 20 |
| Double Gang | Deep | FD-2 | 100 |

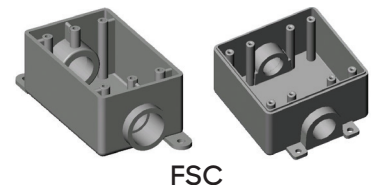
Product availability may vary by region



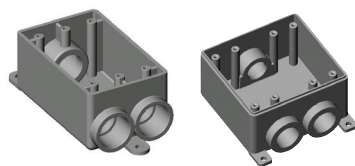
FSE



FSS



FSC



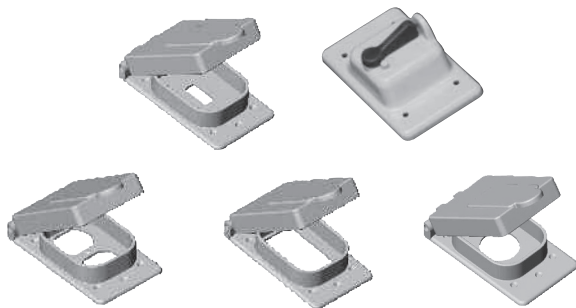
FSCC



FD Blank

| Type | Description | Part Number | Package Quantity |
|----------------------------|--------------------------------|-------------|------------------|
| Weatherproof Covers | | | |
| Single Gang | Toggle Switch | WTG 15/10 | 20 |
| Single Gang | Toggle Switch with Lock | VSC 15/10 | 20 |
| Single Gang | Duplex Receptacle | WDR 15/10 | 20 |
| Single Gang | GFI Receptacle | WGF 15/10 | 20 |
| Single Gang | Single Receptacle - 15 amps | WTL 15 | 10 |
| Double Gang | Double Toggle Switch with Lock | VSC20-2 | 10 |
| Double Gang | Double GFI Receptacle | VSGG20-2 | 15 |
| Double Gang | Double Duplex Receptacle | VSDD20-2 | 15 |
| Covers | | | |
| Single Gang | Toggle Switch | TSC 15/10 | 100 |
| Single Gang | Duplex Receptacle | DRC 15/10 | 100 |
| Single Gang | Single Blank with Gasket | FSKIT | 50 |
| Double Gang | Double Switch | TSC20-2 | 50 |
| Double Gang | Double Duplex | DRC20-2 | 50 |
| Double Gang | Double Blank with Gasket | BRC20-2 | 50 |

Product availability may vary by region



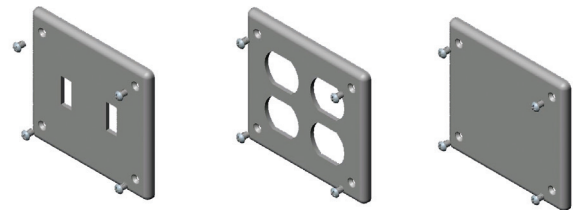
Single Gang Weatherproof Covers



Double Gang Weatherproof Covers



Single Gang Covers



Double Gang Covers

Cement, Cleaner, Primer

| Type | Size | Part Number | Package Quantity |
|----------------------|-----------|-------------|------------------|
| Cement | | | |
| Regular Body - Clear | Pint | CEMCR10 | 12 |
| Regular Body - Clear | Quart | CEMCR20 | 12 |
| Medium Body - Clear | Half Pint | CEMC05 | 24 |
| Medium Body - Clear | Pint | CEMC10 | 12 |
| Medium Body - Clear | Quart | CEMC20 | 12 |
| Medium Body - Clear | Gallon | CEMC80 | 6 |
| Medium Body - Gray | Quart | CEMG20 | 12 |
| Heavy Body - Clear | Quart | CEMCH20 | 12 |
| All Weather - Clear | Pint | CWC10 | 12 |
| All Weather - Clear | Quart | CWC20 | 12 |
| All Weather - Blue | Quart | CWB20 | 12 |
| Cleaner | | | |
| Clear | Quart | CLN20 | 12 |
| Primer | | | |
| Clear | Quart | PRMC20 | 12 |
| Purple | Pint | PRMP10 | 12 |
| Purple | Quart | PRMP20 | 12 |

Product availability may vary by region





Allied Tube & Conduit ▲ AFC Cable Systems ▲ Heritage Plastics ▲ Unistrut
Unistrut Construction ▲ Cope ▲ US Tray ▲ Calbrite ▲ Calbond ▲ Kaf-Tech
Columbia-MBF ▲ Eastern Wire + Conduit ▲ ACS/Uni-Fab ▲ Cii
Power-Strut ▲ Calconduit ▲ Razor Ribbon ▲ Calpipe Security
FRE Composites ▲ Vergokan ▲ Flexicon ▲ Marco

Atkore

1202 North Bowie Drive
Weatherford, TX 76086

PHONE / 817-594-8791

FAX / 817-594-8211

atkore.com/heritageplastics

Want to join a company that helps you build
the mindset, skill set and tool set for success?
Visit us at atkore.com/careers