

SAFETY YELLOW TRAFFIC POST



Telespar® Round Traffic Post & Wedge Anchors

The Wedge-Anchor System offers a simple, cost effective sign post anchor system. It is installed flush with the ground, which prevents damage to the socket system and the vehicle upon impact.

Complete Wedge Anchor Post and Socket Assemblies

Outside Diameter/Guage	Post Wall Thickness (in)	Post Weight (lb/ft)
2.375" x 10	.134	3.2101
2.375" x 12	.109	2.6404
2.375" x 13	.095	2.3155
2.375" x 14	.083	2.0336
2.375" x 16	.065	1.6051
2.875" x 12*	.109	3.1444
2.875" x 10	.134	3.9264

*Used for Anchors

Available in: Clear Coat · High Visibility Yellow
Interstate Green · National Park Brown
Transit Black · White

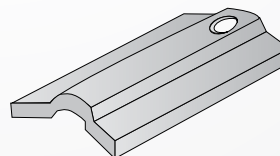
Traffic Post

Galvanized 2 3/8" O.D. traffic post available in several wall thicknesses



Wedge

Locks traffic post into socket



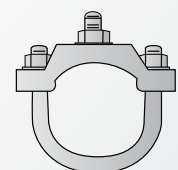
Tubular Socks

2 7/8" O.D. x 27" long, 12 Ga. wall thickness



Sign Bracket

Posts may be ordered with sign brackets or with pre-punched 15-hole pattern



For more info visit atkore.com/atcm

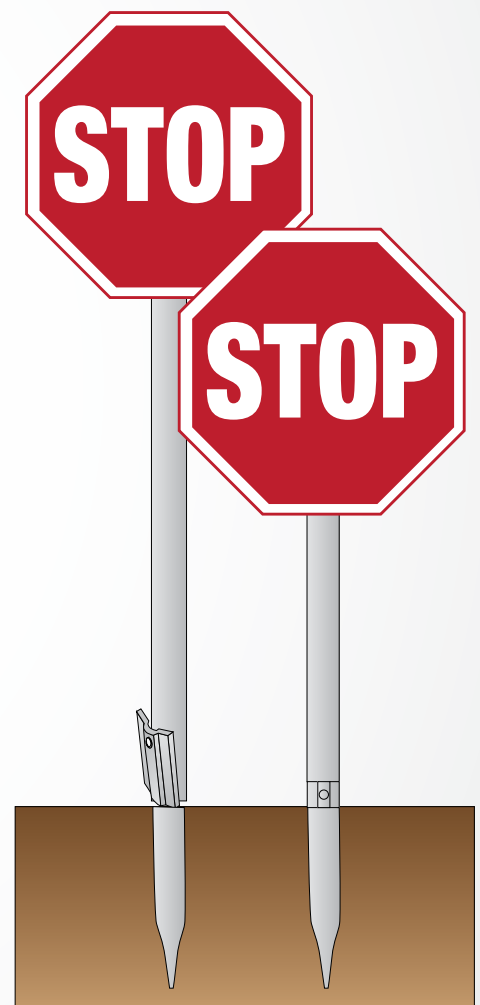
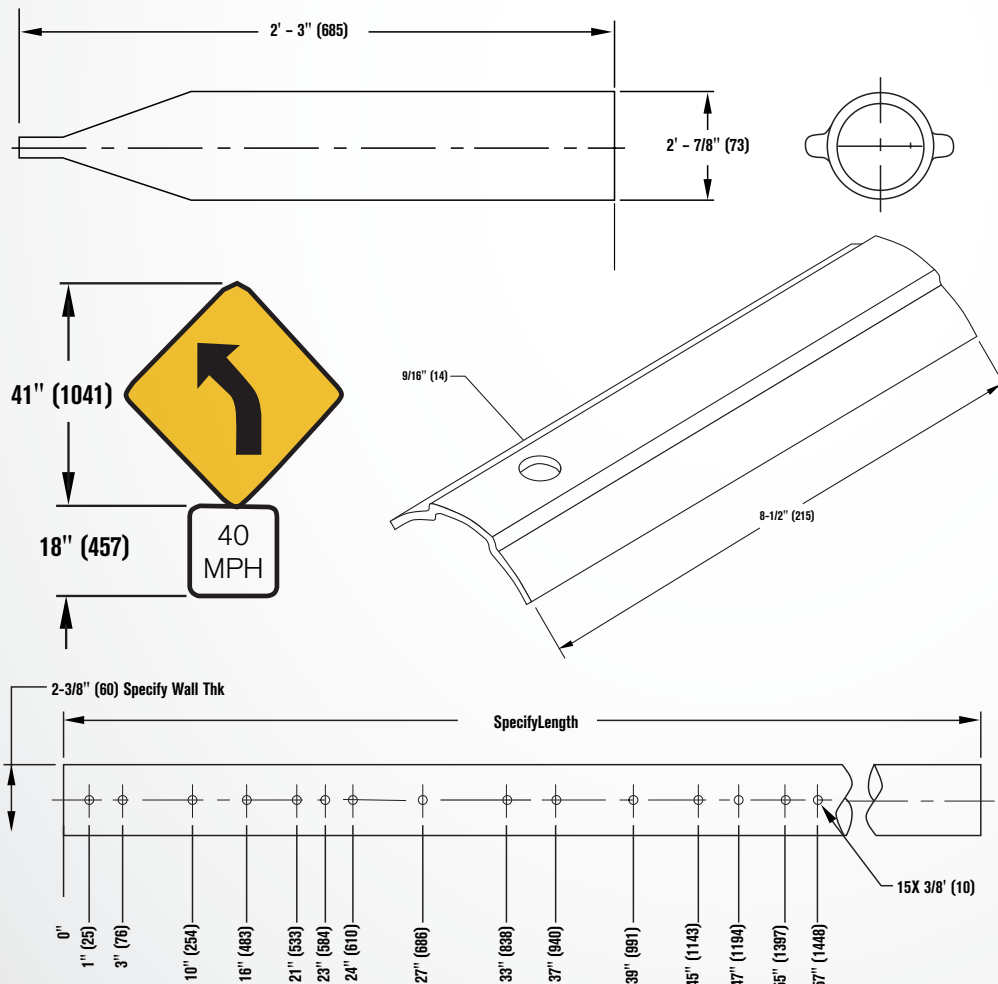
Galvanized & Powder Coated Traffic Posts

Coatings Available

- Clear Coat - FloCoat®
0.6oz/ft² or G210
Pre-Galvanized
- High Visibility Yellow
- Interstate Green
- National Park Brown
- Transit Black
- White

Allied Traffic Posts Have the Following Characteristics and Properties

1. Finished Tubing: In accordance with ASTM A 500.
2. Exterior Coatings: In accordance with ASTM A787, Type 3 or A653 G210.
 - 2.1 In-line hot-dip galvanized to a minimum coating zinc weight of 0.6 oz/ft.²
 - 2.2 Conversion coating applied over the galvanized finish to provide additional corrosion protection.
 - 2.3 Clear organic polymer applied as the top surface coat to enhance the tubing's appearance, retard oxidation and provide a primer base for further painting or powder coating processes.
3. Interior Coating: Full zinc based organic coating applied to 100% of the interior surface for corrosion protection or A653 G210.
4. Dimensions: Posts are 2.375" ± 0.015" in outside diameter; wall thickness 16 gauge (0.065"). (14 GA) (13 GA) (12 GA) (10 GA)
5. Mechanical Properties: 50,000 psi minimum yield strength; 55,000 psi minimum tensile strength; 20% minimum elongation in 2 inches.



Note: The hole at 55" (1397) facilitates the installation of a standard 30degree curve sign and an 18" (457) advisory speed warning.