

# Co-Loading Solutions

## Improving the Efficiency of How You Do Business with Atkore

**Fewer shipments, reduced complexity, lower freight costs and One Stop Shopping makes it easy to do business with Atkore.**

- One Stop Shopping from our Regional Service Centers
- Fewer Purchase Orders & Shipments
- Lower Freight Costs
- Fast and Reliable Supply

### What is a Co-Load?

- Order parts from 2 or more high-moving product lines: Steel Conduit, PVC Conduit & Fittings, MC Cable, Strut & Strut Fittings
- 8,000 pounds minimum for freight allowed
- 2,000 pound minimum to 35,000 pound maximum order size
- Co-loads originate from one RSC
- Continental US only

## How It Works

Place a purchase order for eligible SKUs from at least two different product families. Combined order must exceed 8,000 pounds for freight allowed.

### Co-Load Purchase Order Example

Item Description	Item No.	Qty.	Weight
½" EMT 10'	898302	7,000 ft.	2,100 lbs.
4" EMT 10'	101790	600 ft.	2,358 lbs.
4" Sch 40 PVC 10'	4040010	1,140 ft.	2,612 lbs.
4" PVC Coupling	59610	100	75 lbs.
1-½" Solid Channel 10'	P1000 10HG	1,000 ft.	1,910 lbs.
12-2 MC Glide 250C	A004-42-00	1,500 ft.	156 lbs.



Number of Product Lines Ordered:

**4**



Total Weight Ordered:

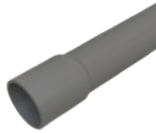
**9,211 lbs.**

# Atkore Co-Load Part Numbers

Select eligible SKUs below from at least two product categories for a Co-Load



Steel Conduit



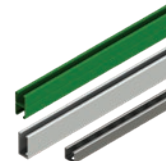
PVC Conduit



PVC Fittings



MC Cable



Strut



Strut Fittings

Item Description	Catalog No.
<b>EZ-Pull EMT Steel Conduit 10'</b>	
½"	898302
¾"	898303
1"	898304
1-¼"	101576
1-½"	101584
2"	101592
2-½"	101600
3"	101618
3-½"	101782
4"	101790
EMT Stencil is Provided in Kent RSC Only	
<b>PVC Schedule 40 and 80 Conduit Bell End</b>	
<b>Schedule 40 10'</b>	
¾"	8103
1"	8104
1-¼"	8105
1-½"	8106
2"	8108
2-½"	8110
3"	8112
4"	8116
<b>Schedule 40 20'</b>	
4"	8516
<b>Schedule 80 10'</b>	
1"	9304
2"	9308
3"	9312
4"	9316
<b>PVC Fittings and Elbows</b>	
<b>Coupling</b>	
1"	59603
2"	59606
3"	59608
4"	59610
<b>Sch 40 90 Degree Elbow Plain End</b>	
1"	59590
2"	59593
<b>Terminal Adapter</b>	
2"	59620

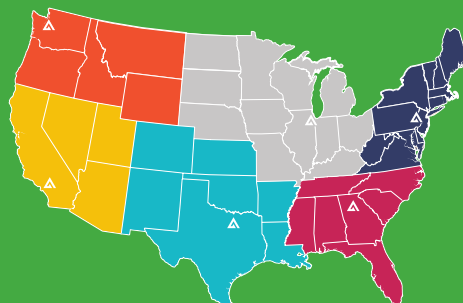
Item Description	Catalog No.
<b>MC Glide Armored Cable</b>	
<b>Aluminum</b>	
10-2 (250)	A007-42-00
10-3 (250)	A008-42-00
12-2 (250) Black, White, Green	A004-42-00
12-2 (250) Brown, Gray, Green	A004-42-01
12-2 (1,000)	A004-60-00
12-2 Stranded (250)	A058-42-00
12-3 (250)	A005-42-00
12-3 (1,000)	A005-60-00
14-2 (250)	A001-42-00
<b>Luminary Cable</b>	
16-2 TRJ/12-2 (250)	AL04-42-L00
16-2 TRJ/12-3 (250)	AL05-42-L00
16-2 TRJ/12-3 (1,000)	AL04-60-L00
<b>LIQUID-TUFF Liquidtight Flexible Conduit</b>	
<b>Non-Metallic</b>	
½"	6002-30-00
¾"	6003-30-00
1"	6004-30-00
<b>Steel</b>	
½"	6202-30-00
¾"	6203-30-00
1"	6204-30-00
1-¼"	6205-24-00
2"	6207-24-00
<b>Reduced Wall Aluminum</b>	
½"	5602-30-00
¾"	5603-30-00
1"	5604-24-00
1-¼"	5605-24-00
2"	5607-22-00
<b>Reduced Wall Steel</b>	
½"	5502-30-00
¾"	5503-30-00
1"	5504-24-00
1-¼"	5505-24-00

Item Description	Catalog No.
<b>Strut</b>	
<b>1-½" Solid Channel</b>	
Hot Dipped 10'	P1000 10HG
Pre Galvanized 10'	P1000 10PG
Pre Galvanized 20'	P1000 20PG
Pre Galvanized 10' Back-to-Back	P1001 10PG
Pre Galvanized 20' Back-to-Back	P1001 20PG
<b>1-½" Slotted Channel</b>	
Hot Dipped 10'	P1000T 10HG
Pre Galvanized 10'	P1000T 10PG
Pre Galvanized 20'	P1000T 20PG
<b>1¾" 14 Gauge Slotted Channel</b>	
Pre Galvanized 10'	P4100T 10PG
<b>Strut Fittings</b>	
<b>Flat Plate - Steel</b>	
2-Hole	P1065 EG
2-Hole 45 Closed Angle	P1186 EG
2-Hole 45 Open Angle	P1546 EG
2-Hole 90 Angle	P1026 EG
2-Hole 90 Angle 2-¼"	P1068 EG
3-Hole 90 Angle	P1036 EG
3-Hole U Shape	P1737 EG
3-Hole Z Shape	P1045 EG
4-Hole	P1067 EG
4-Hole 45 Open Angle	P2265 EG
4-Hole 90 Angle	P1325 EG
4-Hole L Shape	P1380A EG
4-Hole T Shape	P1031 EG
4-Hole U-Shape Splice	P1377 EG
4-Hole Hinge	P1354 EG
5-Hole Cross	P1028 EG
5-Hole U Shape	P1047 EG
7-Hole 90 Gusseted	P2484 EG
8-Hole Wing	P2346 EG
<b>Pipe Clamps - Rigid</b>	
¾"	P1112 EG
1"	P1113 EG
1-¼"	P1114 EG
1-½"	P1115 EG
2"	P1117 EG
2-½"	P1118 EG
3"	P1119 EG
4"	P1121 EG

Item Description	Catalog No.
<b>Pipe Clamps - ASM Rigid</b>	
¾"	P1112AS EG
1"	P1113AS EG
1-¼"	P1114AS EG
1-½"	P1115AS EG
2"	P1117AS EG
2-½"	P1118AS EG
3"	P1119AS EG
4"	P1121AS EG
<b>Pipe Clamps - Universal</b>	
¾"	P1212AS EG
1"	P1213AS EG
1-¼"	P1214AS EG
1-½"	P1215AS EG
2"	P1217AS EG
<b>Post Base</b>	
2 Hole	P2941 EG
6 Hole	P2942 EG
6 Hole Square	P2072ASQ EG
8 Hole Square	P2073ASQ EG
<b>Beam Clamp</b>	
U-Bolt	P2785 EG
U-Bolt Weld	P2786 EG
<b>Square Washer</b>	
¾"	P1062 EG
¾"	P1063 EG
½"	P1064 EG
<b>Plastic White End Cap</b>	
P1000 1-½"	P2860-10 VV
<b>Column Insert</b>	
1-½"	P3087 EG
<b>Channel Nut</b>	
*¼-20	P3006-1420 EG
*½-13	P3010 EG
*¾-16	P3008 EG
<b>Strut Rod</b>	
<b>Threaded Rod</b>	
¾" x 10'	HTHR037 10EG
½" x 10'	HTHR050 10EG

## Atkore Regional Service Centers (RSCs)

Atkore's most frequently ordered SKUs are strategically stocked at 6 Regional Service Centers throughout U.S. Co-Load with the Regional Service Centers to save time and money.



Download our Real-Time Order Tracking Apps at the Apple App Store or Google Play. SEARCH: "ATKORE".

Learn more at [atkore.com/resources/regional-service-centers](http://atkore.com/resources/regional-service-centers)