



PVC & HDPE Pipe for Plumbing Applications



Atkore™

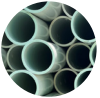
Table of Contents

PVC



PRESSURE RATED PIPE

Schedule 40 Pressure Pipe.....	6
Schedule 40 Pressure/DWV Pipe.....	7
Schedule 80 Pressure Pipe.....	8
IPS SDR Solvent-Weld Pressure Pipe.....	9
IPS SDR Gasketed Pressure Pipe.....	11
Well Casing.....	13



DWV PIPE

Cellular Core Pipe.....	14
ASTM D2949 Pipe.....	14



SEWER PIPE

Gasketed Gravity Sewer Pipe.....	15
Solvent-Weld Sewer Pipe.....	17

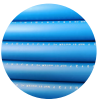


DRAINAGE PIPE

ASTM D2729.....	18
ASTM D3034.....	19

PVC Truck Loading Chart.....	20
------------------------------	----

HDPE



WATER-LINE™ WATER PIPE

Crystal-Line™ Water Tubing.....	25
---------------------------------	----

HDPE Truck Loading Chart.....	26
-------------------------------	----

Product availability differs by region. Reach out to your sales representative for more information.

Connecting Homes and Businesses Across America to Essential Water Infrastructure.

Life as we know it would not exist without reliable plumbing. That's why Atkore prioritizes quality in our manufacturing process - and why you can depend upon our products to keep water flowing.

Quality and Performance You Can Rely On

Water plays a fundamental role in everyday life, which means quality and reliability are top of mind for plumbing projects.

Build America, Buy America Certified

Our PVC & HDPE pipe is proudly made in the U.S. and is BABA compliant.

NSF, AWWA, ASTM, and FM Compliance

Heritage Plastics products conform to relevant codes and standards to ensure quality and safety.

Applications



Above Ground Construction

Atkore offers a full line of plumbing pipe for all types of above-ground construction.



Landscaping

Beyond the home and business, PVC and HDPE pipe is essential for keeping the landscape green.

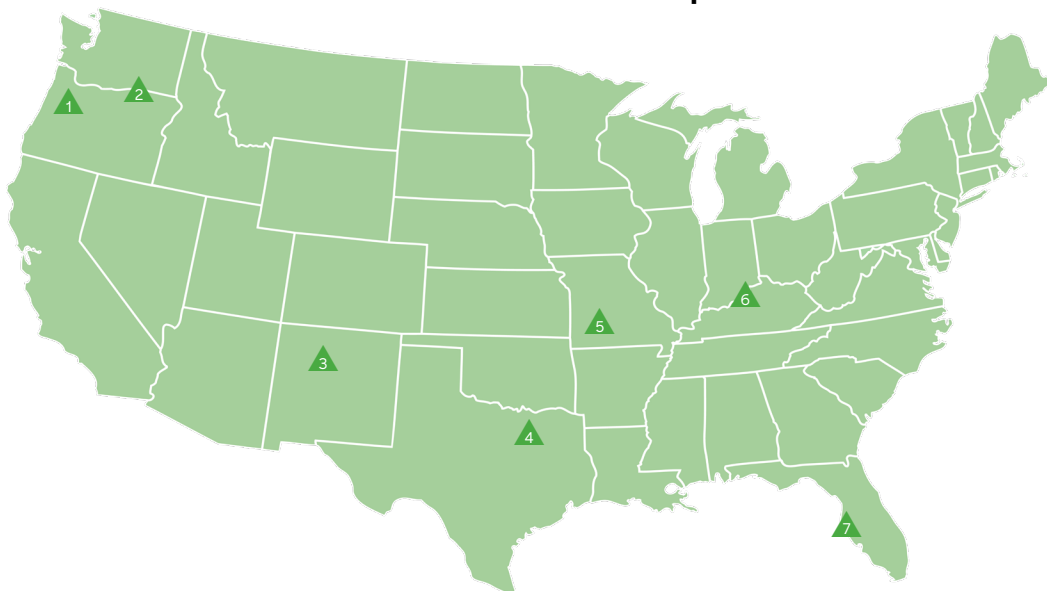
About



Atkore (NYSE: ATKR) is a global manufacturer of industrial products with 5,000+ employees and 49 manufacturing and distribution plants. Atkore produces a wide range of PVC and HDPE pipe products for Municipal Waterworks, Plumbing, Irrigation, Oil & Gas, Natural Gas, Industrial, and Electrical applications through the Heritage Plastics and United Poly Systems brands.

With our expansive product offerings, large network of manufacturing locations, and relentless focus on our customer service, we provide an end-to-end solution for water infrastructure projects. Atkore pipe is proudly made in the U.S.A. and is Build America, Buy America compliant.

PVC & HDPE Pipe Plant Locations



- ▲ Eugene, OR
- ▲ Pendleton, OR
- ▲ Albuquerque, NM
- ▲ Dallas, TX
- ▲ Springfield, MO
- ▲ Louisville, KY
- ▲ Tampa, FL



Sustainability



Atkore's focus on sustainability can be seen in every facet of our operations: from achieving the ESG goals we set toward reducing carbon and GHG emissions two years ahead of our target, to our dedication to increasing energy efficiency at our plants, through the continued development of our climate risk management strategy.

In 2023, we were recognized by Newsweek as one of America's Greenest Companies, were included in USA Today's list of America's Climate Leaders, and received the Ecovadis Bronze Sustainability Rating for the second year in a row.



Learn more about
Atkore's ESG Goals

Our Commitment to Customers

At Atkore, our focus is on customer relationships. We strive for excellence in getting you the products you need, when you need them. Our team is always ready to support critical projects across the U.S. with high-quality pipe that's built to last.



How to Order



Placing an Order

Step 1: Complete a credit application and submit a W9 through your agent or customer service representative to get set up in our system.

Step 2: Work with your agent or CSR to obtain a quote and then submit a PO for the order.

Contact Customer Service: WaterProductCustomerService@atkore.com

Note that special orders are non-cancelable, non-returnable, and non-refundable.



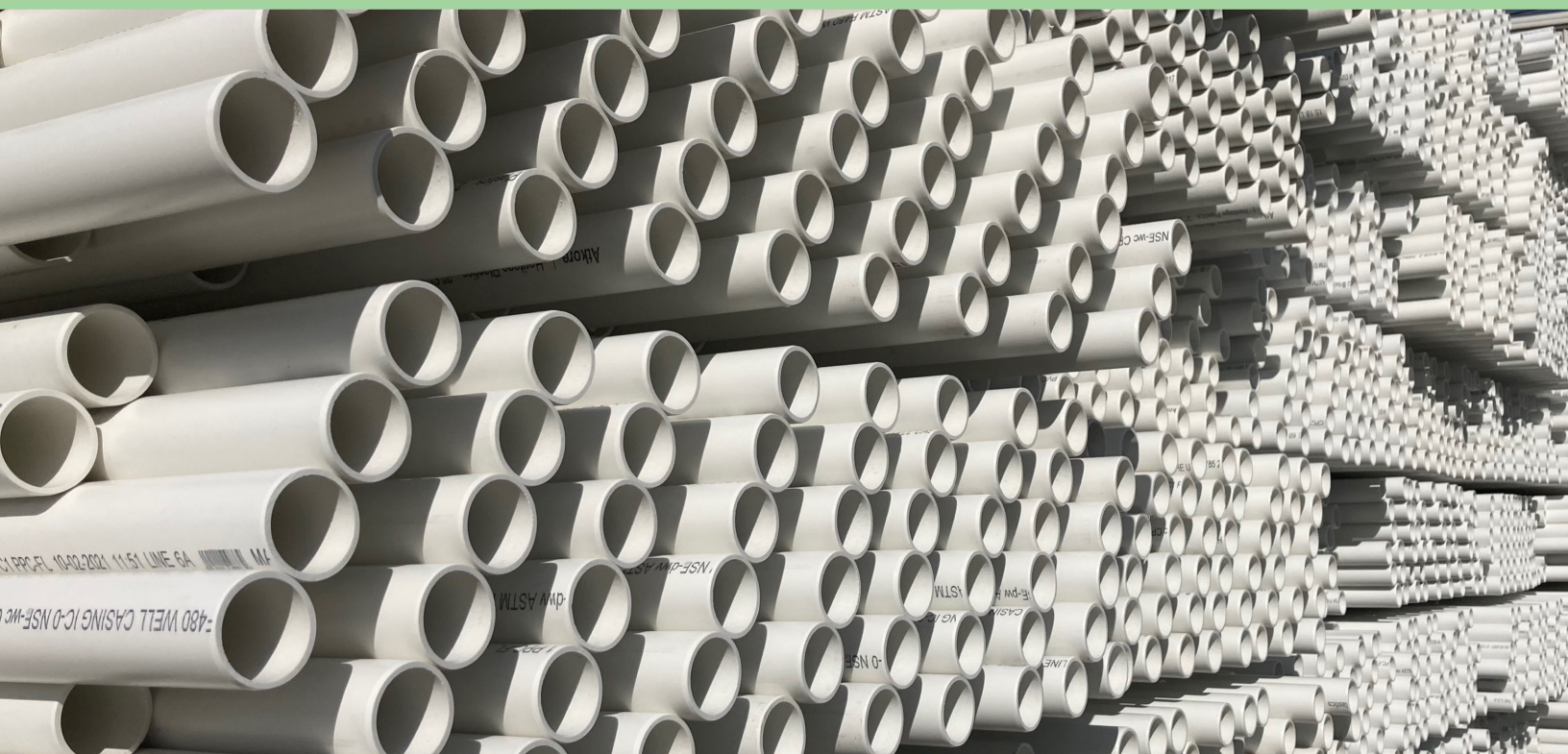
Warranty Information

- Goods will materially conform to published specifications and be free from defects in materials and workmanship 12 months from date of manufacture.
- Repair or replacement of defective product.



See full
warranty details

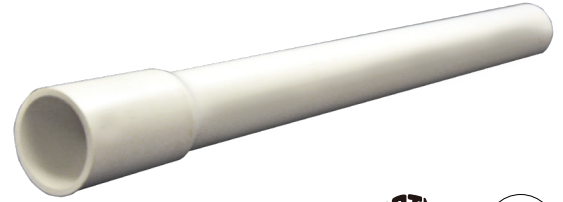
PVC



PVC Pressure Rated Pipe

Schedule 40 Pressure Pipe

- Conforms to ASTM D1785
- Conforms to ASTM D2665 for DWV applications in 1 1/2", 2", 3", 4", and 6"-12" trade sizes
- Conforms to ASTM F480 for well casing applications in 2"-12" trade sizes
- Certified to the requirements of NSF 14 or NSF 61
- Product manufactured with one integral solvent-weld bell per length
- Standard overall pipe length is 10 feet or 20 feet
- Standard color is white



Trade Size (in)	Part Number		Pressure Rating (psi)	Average OD (in)	Weight per Foot (WPF)	Crate Quantity (ft)	
	10-foot	20-foot				10-foot	20-foot
1/2	5405010	5405020	600	0.840	0.166	3,600	7,200
3/4	5407510	5407520	480	1.050	0.221	4,000	8,000
1	5410010	5410020	450	1.315	0.328	2,800	5,600
1 1/4	5412510	5412520	370	1.660	0.444	2,200	4,400
1 1/2	5415010	5415020	330	1.900	0.531	1,800	3,600
2	5420010	5420020	280	2.375	0.714	1,050	2,100
2 1/2	5425010	5425020	300	2.875	1.132	730	1,460
3	5430010	5430020	260	3.500	1.481	750	1,500
4	5440010	5440020	220	4.500	2.111	570	1,140
5	5450010	5450020	190	5.563	2.860	380	760
6	5460010	5460020	180	6.625	3.714	260	520
8	5480010	5480020	160	8.625	5.591	150	300
10	—	54100020	140	10.750	7.928	—	80
12	—	54120020	130	12.750	10.483	—	60

PVC Pressure Rated Pipe

Schedule 40 Pressure/DWV Pipe

- Conforms to ASTM D1785
- Conforms to ASTM D2665 for DWV applications in 1 1/2", 2", 3", 4", and 6"-12" trade sizes
- Certified to the requirements of NSF 14 or NSF 61
- Product manufactured in plain end
- Standard overall pipe length is 10 feet or 20 feet
- Standard color is white



Trade Size (in)	Part Number		Pressure Rating (psi)	Average OD (in)	Weight per Foot (WPF)	Crate Quantity (ft)	
	10-foot	20-foot				10-foot	20-foot
1/2	5405010P	5405020P	600	0.840	0.166	3,600	7,200
3/4	5407510P	5407520P	480	1.050	0.221	4,000	8,000
1	5410010P	5410020P	450	1.315	0.328	2,800	5,600
1 1/4	5412510P	5412520P	370	1.660	0.444	2,200	4,400
1 1/2	5415010P	5415020P	330	1.900	0.531	1,800	3,600
2	5420010P	5420020P	280	2.375	0.714	1,050	2,100
2 1/2	5425010P	5425020P	300	2.875	1.132	730	1,460
3	5430010P	5430020P	260	3.500	1.481	750	1,500
4	5440010P	5440020P	220	4.500	2.111	570	1,140
5	5450010P	5450020P	190	5.563	2.860	380	760
6	5460010P	5460020P	180	6.625	3.714	260	520
8	5480010P	5480020P	160	8.625	5.591	150	300
10	—	54100020P	140	10.750	7.928	—	80
12	—	54120020P	130	12.750	10.483	—	60

PVC Pressure Rated Pipe

Schedule 80 Pressure Pipe

- Conforms to ASTM D1785
- Certified to the requirements of NSF 14 or NSF 61
- Standard overall pipe length is 20 feet
- Standard color is gray
- Product manufactured in plain end or with one integral solvent-weld bell per length



Trade Size (in)	Part Number	Pressure Rating (psi)	Average OD (in)	Weight per Foot (WPF)	Crate Quantity (ft)
Plain End					
½	5805020P	850	0.840	0.211	7,200
¾	5807520P	690	1.050	0.287	8,000
1	5810020P	630	1.315	0.423	5,600
1¼	5812520P	520	1.660	0.584	4,400
1½	5815020P	470	1.900	0.708	3,600
2	5820020P	400	2.375	0.980	2,100
2½	5825020P	420	2.875	1.495	1,460
3	5830020P	370	3.500	2.002	1,500
4	5840020P	320	4.500	2.928	1,140
5	5850020P	290	5.563	4.061	760
6	5860020P	280	6.625	5.586	520
8	5880020P	250	8.625	8.486	300
Belled End					
½	5805020	850	0.840	0.211	7200
¾	5807520	690	1.050	0.287	8000
1	5810020	630	1.315	0.423	5600
1¼	5812520	520	1.660	0.584	4400
1½	5815020	470	1.900	0.708	3600
2	5820020	400	2.375	0.980	2100
2½	5825020	420	2.875	1.495	1460
3	5830020	370	3.500	2.002	1500
4	5840020	320	4.500	2.928	1140
5	5850020	290	5.563	4.061	760
6	5860020	280	6.625	5.586	520
8	5880020	250	8.625	8.486	300

PVC Pressure Rated Pipe

IPS SDR Solvent-Weld Pressure Pipe

- Conforms to ASTM D2241
- Certified to the requirements of NSF 61 or NSF 14
- Product manufactured with one integral solvent-weld bell per length
- Standard overall pipe length is 20 feet
- Standard color is white



Trade Size (in)	Part Number	Average OD (in)	Weight per Foot (WPF)	Crate Quantity (ft)
SDR 64 - Pressure Rating 63 psi				
8	5980020	8.625	2.396	300
SDR 41 - Pressure Rating 100 psi				
3	5030020	3.500	0.610	1,500
4	5040020	4.500	1.008	1,140
5	5050020	5.563	1.541	760
6	5060020	6.625	2.185	520
8	5080020	8.625	3.704	300
SDR 32.5 - Pressure Rating 125 psi				
1¼	5512520	1.660	0.201	4,400
1½	5515020	1.900	0.231	3,600
2	5520020	2.375	0.352	2,100
2½	5525020	2.875	0.516	1,460
3	5530020	3.500	0.764	1,500
4	5540020	4.500	1.263	1,140
5	5550020	5.563	1.930	760
6	5560020	6.625	2.738	520
8	5580020	8.625	4.641	300
SDR 26 - Pressure Rating 160 psi				
1¼	5112520	1.660	0.213	4,400
1½	5115020	1.900	0.279	3,600
2	5120020	2.375	0.436	2,100
2½	5125020	2.875	0.636	1,460
3	5130020	3.500	0.947	1,500
4	5140020	4.500	1.566	1,140
5	5150020	5.563	2.393	760
6	5160020	6.625	3.394	520
8	5480020	8.625	5.591	300

PVC Pressure Rated Pipe

IPS SDR Solvent-Weld Pressure Pipe (cont'd)

Trade Size (in)	Part Number	Average OD (in)	Weight per Foot (WPF)	Crate Quantity (ft)
SDR 21 - Pressure Rating 200 psi				
¾	5207520	1.050	0.124	8,000
1	5210020	1.315	0.164	5,600
1¼	5212520	1.660	0.261	4,400
1½	5215020	1.900	0.342	3,600
2	5220020	2.375	0.535	2,100
3	5230020	3.500	1.161	1,500
4	5240020	4.500	1.919	1,140
5	5250020	5.563	2.933	760
6	5260020	6.625	4.167	520
8	5280020	8.625	7.039	300
SDR 13.5 - Pressure Rating 315 psi				
½	5305020	0.840	0.101	7,200

PVC Pressure Rated Pipe

IPS SDR Gasketed Pressure Pipe

- Conforms to ASTM D2241
- Certified to requirements of NSF 14 or NSF 61
- Each spigot end is beveled to facilitate assembly and reference marked to indicate proper insertion depth
- Product manufactured with one integral gasketed bell per length
- Standard laying length of pipe is 20 feet
- Standard color is white



Trade Size (in)	Part Number	Average OD (in)	Weight per Foot (WPF)	Crate Quantity (ft)
SDR 64 - Pressure Rating 63 psi				
8	5980020G	8.625	2.462	300
SDR 41 - Pressure Rating 100 psi				
4	5040020G	4.500	1.034	1,140
5	5050020G	5.563	1.580	760
6	1560020G	6.625	2.242	520
8	1580020G	8.625	3.806	300
10	15100020G	10.750	5.934	240
12	15120020G	12.750	8.373	160
SDR 32.5 - Pressure Rating 125 psi				
4	5540020G	4.500	1.295	1,140
5	5550020G	5.563	1.980	760
6	5560020G	6.625	2.809	520
8	5580020G	8.625	4.769	300
10	55100020G	10.750	7.435	240
12	55120020G	12.750	10.490	160

PVC Pressure Rated Pipe

IPS SDR Gasketed Pressure Pipe (cont'd)

Trade Size (in)	Part Number	Average OD (in)	Approximate Weight per Foot (WPF)	Crate Quantity (ft)
SDR 26 - Pressure Rating 160 psi				
3	5130020G		0.964	1500
4	5140020G	4.500	1.605	1140
5	5150020G	5.563	2.454	760
6	5160020G	6.625	3.482	520
8	5180020G	8.625	5.911	300
10	51100020G	10.750	9.216	20
12	51120020G	12.750	13.003	160
SDR 21 - Pressure Rating 200 psi				
1½	5215020G	1.900	0.347	3,600
2	5220020G	2.375	0.542	2,100
2½	5225020G	2.875	0.796	1,460
3	5230020G	3.500	1.182	1,500
4	5240020G	4.500	1.967	1,140
6	5260020G	6.625	4.275	520
8	5280020G	8.625	7.234	300
10	52100020G	10.750	11.277	240
12	52120020G	12.750	15.909	160
SDR 13.5 - Pressure Rating 315 psi				
2	5320020G	2.375	0.819	2,100

PVC Pressure Rated Pipe

Well Casing

- Conforms to ASTM F480 with IC-0 impact class
- Conforms to ASTM D1785
- Conforms to ASTM D2665 for DWV applications in 2", 3", 6" trade sizes
- Certified to requirements of NSF 14 for ASTM F480
- Each spigot end is beveled to facilitate assembly and reference marked to indicate proper insertion depth
- Product manufactured with one integral solvent-weld bell per length
- Standard laying length of pipe is 20 feet
- Standard color is white

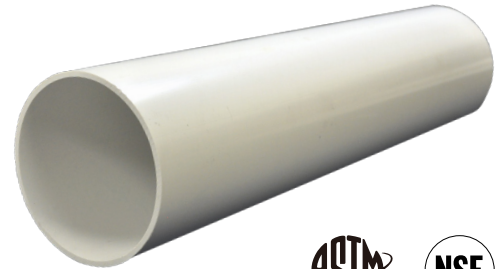


Trade Size (in)	Part Number	Average OD (in)	Weight per Foot (WPF)	Crate Quantity (ft)
2	5420020WC	2.375	0.714	2,100
3	5430020WC	3.500	1.481	1,500
4	5440020WC	4.500	2.111	1,140
5	5450020WC	5.563	2.860	760
6	5460020WC	6.625	3.714	520

PVC DWV Pipe

DWV Cellular Core Pipe

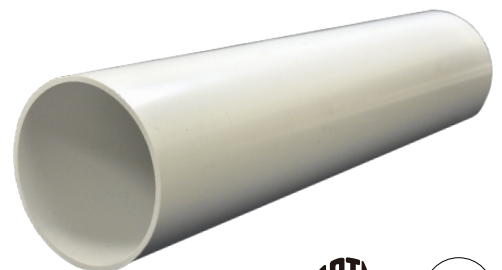
- Conforms to ASTM F891
- Certified to the requirements of NSF 14
- Product manufactured in plain end or with one integral solvent-weld bell per length
- Standard overall pipe length is 10 feet or 20 feet
- Standard color is white
- Lighter weight for easier installation



Trade Size (in)	10-foot Part Number		20-foot Part Number		Average OD (in)	Weight per Foot (WPF)	Crate Quantity (ft)	
	Bell End	Plain End	Bell End	Plain End			10-foot	20-foot
1½	-	2415010P	-	2415020P	1.900	0.384	1,800	3,600
2	-	2420010P	-	2420020P	2.375	0.478	1,050	2,100
3	2430010	2430010P	2430020	2430020P	3.500	0.986	750	1,500
4	2440010	2440010P	2440020	2440020P	4.500	1.307	570	1,140
6	2460010	2460010P	2460020	2460020P	6.625	2.464	260	520

DWV ASTM D2949 Pipe

- Conforms to ASTM D2949
- Certified to requirements of NSF 14
- Product manufactured in plain end
- Standard overall pipe length is 10 feet
- Standard color is white



Trade Size (in)	Part Number	Average OD (in)	Weight per Foot (WPF)	Crate Quantity (ft)
3¼	2332510P	3.250	0.817	880

PVC Sewer Pipe

Gasketed Gravity Sewer Pipe

- Conforms to ASTM D3034
- Each spigot end is beveled to facilitate assembly and reference marked to indicate proper insertion depth
- Products manufactured with one integral gasketed bell per length
- Standard laying length of pipe is 14 or 20 feet
- Standard color is green



Trade Size (in)	Part Number		Average OD (in)	Weight per Foot (WPF)	Crate Quantity (ft)	
	14-foot	20-foot			14-foot	20-foot
SDR 35						
4	3040014G	3040020G	4.215	1.111	1,176	1,680
6	3060014G	3060020G	6.275	2.473	490	700
8	3080014G	3080020G	8.400	4.428	280	400
10	30100014G	-	10.500	6.948	168	-
12	30120014G	-	12.500	9.952	112	-
15	30150014G	-	15.300	14.826	84	-
SDR 26						
4	3140014G	-	4.215	1.479	1,176	-
6	3160014G	-	6.275	3.281	490	-
8	3180014G	-	8.400	5.896	280	-
10	31100014G	-	10.500	9.253	168	-
12	31120014G	-	12.500	13.151	112	-
15	31150014G	-	15.300	19.745	84	-

PVC Sanitary Pipe

Gasketed Gravity Sewer Pipe (cont'd)

Trade Size (in)	Part Number	Average OD (in)	Weight per Foot (WPF)	Crate Quantity (ft)
PS 46				
18	30180014G	18.701	20.862	28
PS 115				
18	31180014G	18.701	27.774	28

PVC Sewer Pipe

Solvent-Weld Sewer Pipe

- Conforms to ASTM D3034 DR 35
- Product manufactured with one integral solvent-weld bell per length
- Standard overall pipe length is 10 feet or 20 feet
- Standard colors are white and green



Trade Size (in)	Part Number	Length (ft)	Average OD (in)	Weight per Foot (WPF)	Crate Quantity (ft)
Solid-wall - White					
4	3040010	10	4.215	1.079	630
	3040020	20			1,260
6	3060010	10	6.275	2.402	260
	3060020	20			520
8	3080010	10	8.400	4.287	140
Solid-wall - Green					
4	3040010GRN	10	4.215	1.079	630
	3040020GRN	20			1,260
6	3060010GRN	10	6.275	2.402	260
	3060020GRN	20			520

PVC Drainage Pipe

Drainage Pipe ASTM D2729

- Conforms to ASTM D2729
- Product manufactured with one integral solvent-weld bell per length
- Standard overall pipe length is 10 feet
- Standard color is white
- Perforated pipe is manufactured with 1/2-inch or 5/8-inch holes and is available in 2-hole or 3-hole configurations



Trade Size (in)	Part Number	Length (ft)	Perf. Hole Diameter (in)	Solid or Perf Pattern	Average OD (in)	Weight per Foot (WPF)	Crate Quantity (ft)
Solid-wall							
3	2730010	10	—	Solid	3.250	0.487	500
4	2740010	10	—	Solid	4.215	0.680	570
6	2760010	10	—	Solid	6.275	1.353	260
Perforated							
3	2730010FH	10	5/8	4-8	3.250	0.487	590
4	2740010F	10	1/2	4-8	4.215	0.680	570
	2740020F	20	1/2	4-8			1,260
	2740010FH	10	5/8	4-8			570
	2740010FH468	10	5/8	4-6-8			570
	2740010FH4812	10	5/8	4-8			570
6	2760010F	10	1/2	4-8	6.275	1.353	260
	2760020F	20	1/2	4-8			520
	2760010FH	10	5/8	4-8			260
	2760010FH468	10	5/8	4-6-8			260

Perforated pipe, with 5/8-inch or 1/2-inch holes, 5 inches on center, are available in 2-hole or 3-hole configurations:

- 2-hole: 4-8 o'clock position - 120° apart
- 3-hole: 4-6-8 o'clock position - 60° apart
- 3-hole: 4-8-12 o'clock position - 120° apart

PVC Drainage Pipe

Drainage Pipe ASTM D3034

- Conforms to ASTM D3034
- Available in solid-wall or with perforations
- Perforated sewer pipe meets the requirements of ASTM D 3034 prior to perforation
- Perforated pipe is manufactured with 1/2-inch or 5/8-inch holes and is available in 2-hole or 3-hole configurations
- Product manufactured with one integral solvent-weld bell per length
- Standard overall pipe length is 20-feet or 10-feet
- Color of pipe is white or green



Trade Size (in)	Part Number	Length (ft)	Perf. Hole Diameter (in)	Solid or Perf Pattern	Average OD (in)	Weight per Foot (WPF)	Crate Quantity (ft)
Solid-wall - White							
4	3040010	10	—	Solid	4.215	1.079	630
	3040020	20	—				1,260
6	3060010	10	—	Solid	6.275	2.402	260
	3060020	20	—				520
8	3080010	10	—	Solid	8.400	4.287	140
Solid-wall - Green							
4	3040010GRN	10	—	Solid	4.215	1.079	630
	3040020GRN	20	—				1,260
6	3060010GRN	10	—	Solid	6.275	2.402	260
	3060020GRN	20	—				520
Perforated - White							
4	3040010F	10	1/2	4-8	4.215	1.079	630
	3040020F	20	1/2	4-8			1,260
	3040010FH	10	5/8	4-8			630
	3040010FH468	10	5/8	4-6-8			630
6	3060010F	10	1/2	4-8	6.275	2.402	260
	3060020F	20	1/2	4-8			520
	3060010FH	10	5/8	4-8			260
	3060010FH468	10	5/8	4-6-8			260
3060020FH468	20	5/8	4-6-8	520			
Perforated - Green							
4	3040010FGRN	10	1/2	4-8	4.215	1.079	630
	3040020FGRN	20	1/2	4-8			
	3040010FHGRN	10	5/8	4-8			
	3040010FH468GRN	10	5/8	4-6-8			
6	3060010FGRN	10	1/2	4-8	6.275	2.402	260
	3060010FGRN	20	1/2	4-8			
	3060010FHGRN	10	5/8	4-8			
	3060010FH468GRN	10	5/8	4-6-8			

Perforated pipe, with 5/8-inch or 1/2-inch holes, 5 inches on center, are available in 2-hole or 3-hole configurations:

2-hole: 4-8 o'clock position - 120° apart

3-hole: 4-6-8 o'clock position - 60° apart

PVC Truck Loading Chart

Product Type	Trade Size	Pieces per Crate	Feet per Crate	Crates per Stack	Single Crate Percentage of Truckload
20-foot lengths Pressure Rated IPS Schedule 40 Schedule 80 Cellular Core DWV	½	360	7,200	9	2.8%
	¾	400	8,000	7	3.6%
	1	280	5,600	6	4.2%
	1¼	220	4,400	7	3.6%
	1½	180	3,600	7	3.6%
	2	105	2,100	7	3.6%
	2½	73	1,460	7	3.6%
	3	75	1,500	4	6.3%
	4	57	1,140	4	6.3%
	5	38	760	4	6.3%
	6	26	520	4	6.3%
	8	15	300	4	6.3%
	10	4	80	8	3.1%
	12	3	60	7	3.6%
20-foot lengths Pressure Rated PIP	6	32	640	4	6.3%
	8	18	360	4	6.3%
	10	12	240	3	8.3%
	12	8	160	4	6.3%
	15	6	120	3	8.3%
20-foot lengths Pressure Rated C900	4	48	960	4	6.3%
	6	14	280	7	3.6%
	8	10	200	5	5.0%
	10	8	160	4	6.3%
	12	3 & 4	60 & 80	7	3.1% & 4.1%

The above chart can be used for mixed truckload volume estimation.
Contact Customer Service for confirmation of full truckload quantities.

PVC Truck Loading Chart

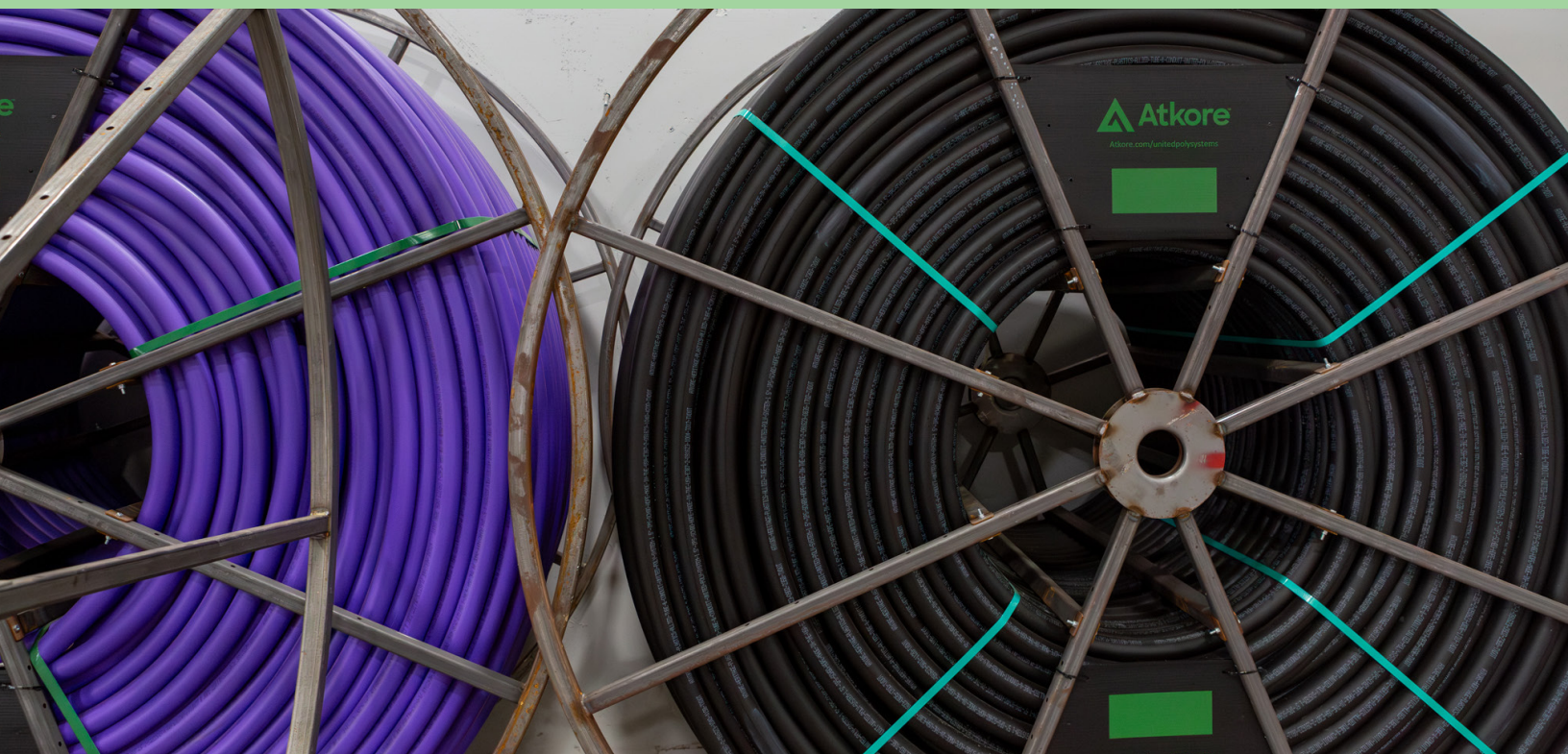
Product Type	Trade Size	Pieces per Crate	Feet per Crate	Crates per Stack	Single Crate Percentage of Truckload
10-foot lengths Cellular Core DWV Pressure Rated DWV 2949	½	360	3,600	9	1.4%
	¾	400	4,000	7	1.8%
	1	280	2,800	6	2.1%
	1¼	220	2,200	7	1.8%
	1½	180	1,800	7	1.8%
	2	105	1,050	7	1.8%
	2½	73	730	7	1.8%
	3	75	750	4	3.1%
	3¼	88	880	4	3.1%
	4	57	570	4	3.1%
	5	38	380	3	4.2%
	6	26	260	4	3.1%
8	15	150	4	3.1%	

The above chart can be used for mixed truckload volume estimation. Contact Customer Service for confirmation of full truckload quantities.

PVC Truck Loading Chart

Product Type	Trade Size	Pieces per Crate	Feet per Crate	Crates per Stack	Single Crate Percentage of Truckload	Full Truckload Totals	
						Crates	Feet
14-foot lengths Gasketed Sewer	4	84	1,176	3	5.6%	18	21,168
	6	35	490	3	5.6%	18	8,820
	8	20	280	3	5.6%	18	5,040
	10	12	168	3	5.6%	18	3,024
	12	8	112	3	5.6%	18	2,016
	15	6	84	3	5.6%	18	1,512
	18	2 & 3	28 & 42	5	2.7 & 4.1%	28	1,050
20-foot lengths Gasketed Sewer	4	84	1,680	3	8.3%	12	20,160
	6	35	700	3	8.3%	12	8,400
	8	20	400	3	8.3%	12	4,800
10-foot lengths Solvent-Weld Sewer	4	63	630	4	3.1%	32	20,160
	6	26	260	4	3.1%	32	8,320
	8	14	140	4	3.1%	32	4,480
20-foot lengths Solvent-Weld Sewer	4	63	1,260	4	6.3%	16	20,160
	6	26	520	4	6.3%	16	8,320
10-foot lengths Drain Line ASTM D2729	3	50	500	8	1.6%	64	32,000
	4	57	570	4	3.1%	32	18,240
	6	26	260	4	3.1%	32	8,320

HDPE



HDPE Part Number Generator

All Atkore Legacy brand part numbers have been replaced, and we now reference our individual HDPE products in literature, labeling and price sheets using the part number builder and a 4-6 digit system SKU number, which are used for RFQ's, order entry and invoicing.

Atkore part numbers are created using ten different values describing the attributes that make up each product and are used to easily identify each product's characteristics.

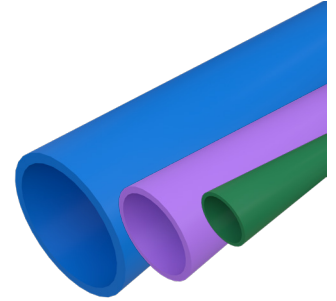
U 125 05 A OR NN 2 NS US

Part No. Sections	Product	Size	SDR (SIDR)	Segmented	Color	Strip	Pull Tape	Lube	Ribbing	Market
Sample Section Value	Conduit/Duct	1.25"	13.5	Single way reel	Orange	None	1130#	None	Smooth	Smooth
Sample Value Code	U	125	05	A	OR	NN	2	N	S	US
Code Finder	UL Listed = U Pressure PE4710 = P MDPE = M	¾" = 075 1" = 100 1.25" = 125 1.5" = 150 2" = 200 2.5" = 250 3" = 300 4" = 400 5" = 500 6" = 600	SDR 7 = 01 SDR 9 = 02 SDR 11 = 03 SDR 11.5 = 04 SDR 13.5 = 05 SDR 15.5 = 06 SDR 17 = 07 SDR 19 = 08 SDR 21 = 09 SDR 32.5 = 10 SCH 40 = 11 SCH 80 = 12 SDR 5 = 13 SDR 26 = 16	Single way reel = A 2way reel = B 3way reel = C 4way reel = D	None = NN Black = BK Red = RD Orange = OR Tan = TN Slate = ST Gray = GY None = NS Green = GN Blue = BL Pink = PK White = WH Terra Cotta = TC Lime = LM Brown = BN Lilac = LC	None = NN Black = BK Red = RD Orange = OR Tan = TN Slate = ST Gray = GY None = NS Green = GN Blue = BL Pink = PK White = WH Terra Cotta = TC Lime = LM Brown = BN Lilac = LC	None = N 200# = 1 1130# = 2 1250# = 3 1800# = 4 2500# = 5 2500# Detectable = 6 1250# Detectable = 7 1800# Detectable = 8 4000# = 9	None = N Lubricated = Y	Smooth = S Ribbed = R	UL 651a Listed = US NSF 61 Potable Water = NS AWWA Water = AS Oil&Gas Gathering = FS MDPE Gas Distribution = MS HDPE D2513 O&G STREAMLINE = DS HDPE BLACK D5213 (GAS DISTRIBUTION) = HS Geothermal = GS

HDPE Water-Line™

Crystal-Line™ Water Tubing

- Applications include potable water, reclaimed water, and sewer
- Conforms to ASTM D2737, AWWA C901
- Certified to NSF for potable water applications
- Diameter range of 3/4" - 2"
- CTS pipe sizes
- Available in sticks, coils, and reels
- Standard colors are black, solid blue, lavender, or green



Nominal Pipe Size (in)	SDR	Dimensions		Approximate Weight per 100'	Standard
		Average OD (in)	Min. Wall Thickness (in)		
CTS					
3/4	9	0.875	0.097	10.4	ASTM D2737/AWWAC901
1	9	1.125	0.125	17.2	ASTM D2737/AWWAC901
1 1/4	9	1.375	0.153	25.7	ASTM D2737/AWWAC901
1 1/2	9	1.625	0.181	36.0	ASTM D2737/AWWAC901
2	9	2.125	0.236	61.3	ASTM D2737/AWWAC901

These are nominal values and used as guidelines only.
This is not a product specification and does not indicate minimum or maximum operating values.

HDPE Truck Loading Chart

Reels

Reels Per Truck		24	18	16	14	12	12	8
Pipe Diameter	SDR	48" Reel	66" Reel	72" Reel	83" Reel	96" Reel	102" Reel	120" Reel
3/4"	7	4,000'	8,000'	10,000'	X	X	X	X
3/4"	9	4,000'	8,000'	10,000'	X	X	X	X
3/4"	11	4,000'	8,000'	10,000'	X	X	X	X
3/4"	13.5	4,000'	8,000'	10,000'	X	X	X	X
1"	7	2,500'	5,500'	6,500'	10,000'	X	X	X
1"	9	2,500'	5,500'	6,500'	10,000'	X	X	X
1"	11	2,500'	5,500'	6,500'	10,000'	X	X	X
1"	13.5	2,500'	5,500'	6,500'	10,000'	X	X	X
1 1/4"	7	1,000'	3,500'	4,250'	6,600'	8,750'	X	X
1 1/4"	9	1,000'	3,500'	4,250'	6,600'	8,750'	X	X
1 1/4"	11	1,000'	3,500'	4,250'	6,600'	8,750'	X	X
1 1/4"	13.5	1,000'	3,500'	4,250'	6,600'	8,750'	X	X
1 1/4"	15.5	1,000'	3,500'	4,250'	6,600'	8,750'	X	X
1 1/4"	17	1,000'	3,500'	4,250'	6,600'	8,750'	X	X
1 1/2"	7	1,000'	2,500'	3,000'	4,500'	6,300'	7,250'	X
1 1/2"	9	1,000'	2,500'	3,000'	4,500'	6,300'	7,250'	X
1 1/2"	11	1,000'	2,500'	3,000'	4,500'	6,300'	7,250'	X
1 1/2"	13.5	1,000'	2,500'	3,000'	4,500'	6,300'	7,250'	X
1 1/2"	15.5	1,000'	2,500'	3,000'	4,500'	6,300'	7,250'	X
1 1/2"	17	1,000'	2,500'	3,000'	4,500'	6,300'	7,250'	X
2"	7	500'	1,500'	2,000'	2,900'	4,150'	4,500'	X
2"	9	500'	1,500'	2,000'	2,900'	4,150'	5,000'	X
2"	11	500'	1,500'	2,000'	2,900'	4,150'	5,000'	X
2"	13.5	500'	1,500'	2,000'	2,900'	4,150'	5,000'	X
2"	15.5	500'	1,500'	2,000'	2,900'	4,150'	5,000'	X
2"	17	X	1,200'	2,000'	2,700'	4,000'	4,500'	X

HDPE Truck Loading Chart

Sticks

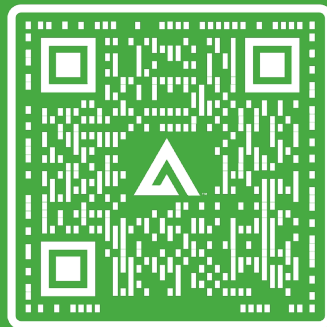
Size	Pressure Class	Bundle qty	Bundles/ TL	Stick Length	TL QTY
IPS					
1"	335-65	163	60	20	195600
1"	335-65	163	30	40	195600
2"	335-65	98	36	20	70560
2"	335-65	98	18	40	70560
2"	335-65	98	18	50	88200
3"	335-65	50	28	20	28000
3"	335-65	50	14	40	28000
3"	335-65	50	14	50	35000
4"	335-65	29	28	20	16240
4"	335-65	29	14	40	16240
4"	335-65	29	14	50	20300
6"	335-65	26	16	20	8320
6"	335-65	26	8	40	8320
6"	335-65	26	8	50	10400
7"	335-65	17	20	20	6800
7"	335-65	17	10	40	6800
7"	335-65	17	10	50	8500
8"	335-65	14	16	20	4480
8"	335-65	14	8	40	4480
8"	335-65	14	8	50	5600
10"	335-65	9	16	20	2880
10"	335-65	9	8	40	2880
10"	335-65	9	8	50	3600
12"	335-65	4	24	20	1920
12"	335-65	4	12	40	1920
12"	335-65	4	12	50	2400
14"	335-65	7	24	20	3360
14"	335-65	7	12	40	3360
14"	335-65	7	6	50	2100

HDPE Truck Loading Chart

Coils

Size	Pressure Class	Coils per Pallet	Pallet Size	Coil Length
IPS				
3/4"	335-130	8	48	500
3/4"	335-130	3	48	2000
1"	335-130	7	48	500
1"	335-130	5	60	1000
1"	335-130	3	60	2000
1 1/4"	335-130	5	60	5000
1 1/4"	335-130	3	80	1000
1 1/4"	335-130	3	80	2000
1 1/2"	335-130	7	80	500
1 1/2"	335-130	7	80	1000
2"	335-130	7	80	500
2"	335-130	7	80	1000
2"	335-130	7	80	2000
3"	335-139	4	CRADLE OR STANDING	500
3"	335-139	2	CRADLE OR STANDING	1000
4"	335-200	3	CRADLE OR STANDING	500
4"	335-200	2	CRADLE OR STANDING	800
6"	200	2	CRADLE OR STANDING	500

Get in Touch



waterproductcustomerservice@atkore.com



**BUILDING BETTER
TOGETHER**

Atkore

16100 South Lathrop Avenue
Harvey, IL 60426

atkore.com/markets/water