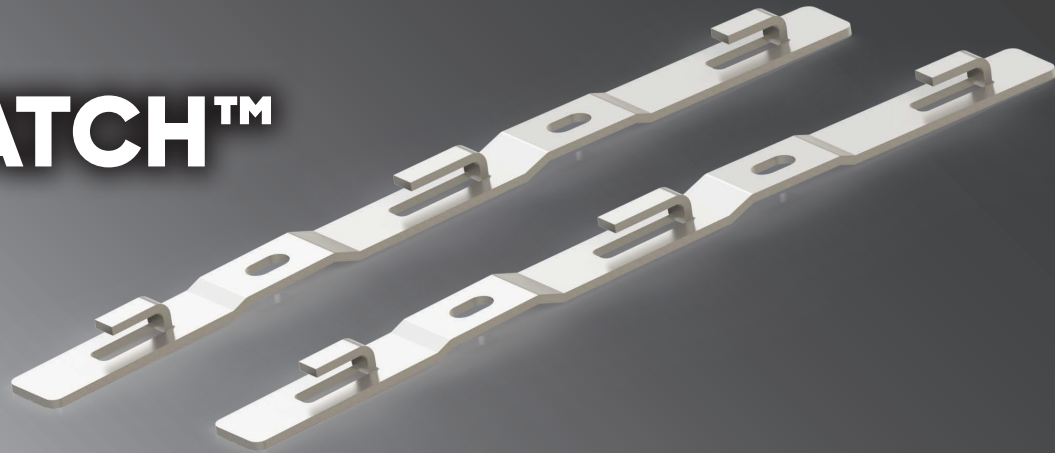


# COPE® QUICK-LATCH™



Introducing NEW Quick-Latch™ for Wire Baskets

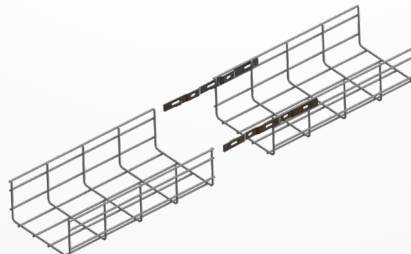
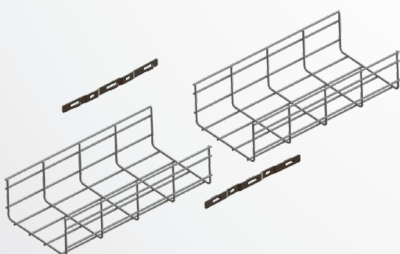
Decrease time and labor when splicing two wire baskets together after field cuts are made that require removal of the factory splice

Cope – meeting all your cabling management challenges

## Features & Benefits

- Only tool needed is a pair of pliers
- Sold individually
- UL approved as grounding path when used with CAT-GC and EG-CBN

Specifications (in)	
Part Number	Quick-Latch™
Material	Mild-Steel
Finish	B633 Electro-Galv
Guage	12
Length	10 ½
Width	¾



For more info visit [atkore.com/cope](http://atkore.com/cope)