

ZONE NETWORKING



What is Zone Networking?

Reduce Time, Labor and Material Costs Every Time You Configure and Reconfigure Your Network

Cii's Drag & Drop network subdivides floors into zones. Each zone is serviced by a consolidation point fed by a trunk cable. Trunk cables are encased in flex to safely eliminate cable trays and to economically protect plenum spaces. Each consolidation point can be configured for 24, 48, 72 or 96 port density. Work stations can be added quickly and easily via transition cables. Network connections can be installed directly in the workstation or can be provided in Access Floor Boxes designed to connect and empower your people.

Reduce Time

Cii's Drag & Drop Network installs incredibly fast. Delivered to your site on time and on budget, the Drag & Drop Network can be installed before the floor or ceiling. This drastically reduces jobsite congestion and helps you run your project safely and efficiently.

Reduce Labor

All cables are pre-cut, pre-terminated and quality checked with state-of-the-art Fluke test equipment. The majority of the network can simply be "dragged and dropped" into place. We then deliver on your schedule enabling you to install before the floor or ceiling tiles.

Reduce Material Costs

Cii's Drag & Drop network can provide real material costs savings. Drag & Drop trunk cables are encased in flexible conduit providing two major benefits:

- Cable trays can be eliminated saving both time and money; and
- CMR cables within flex conduit eliminate the need for expensive plenum materials while still preserving plenum spaces.

Configure & Reconfigure

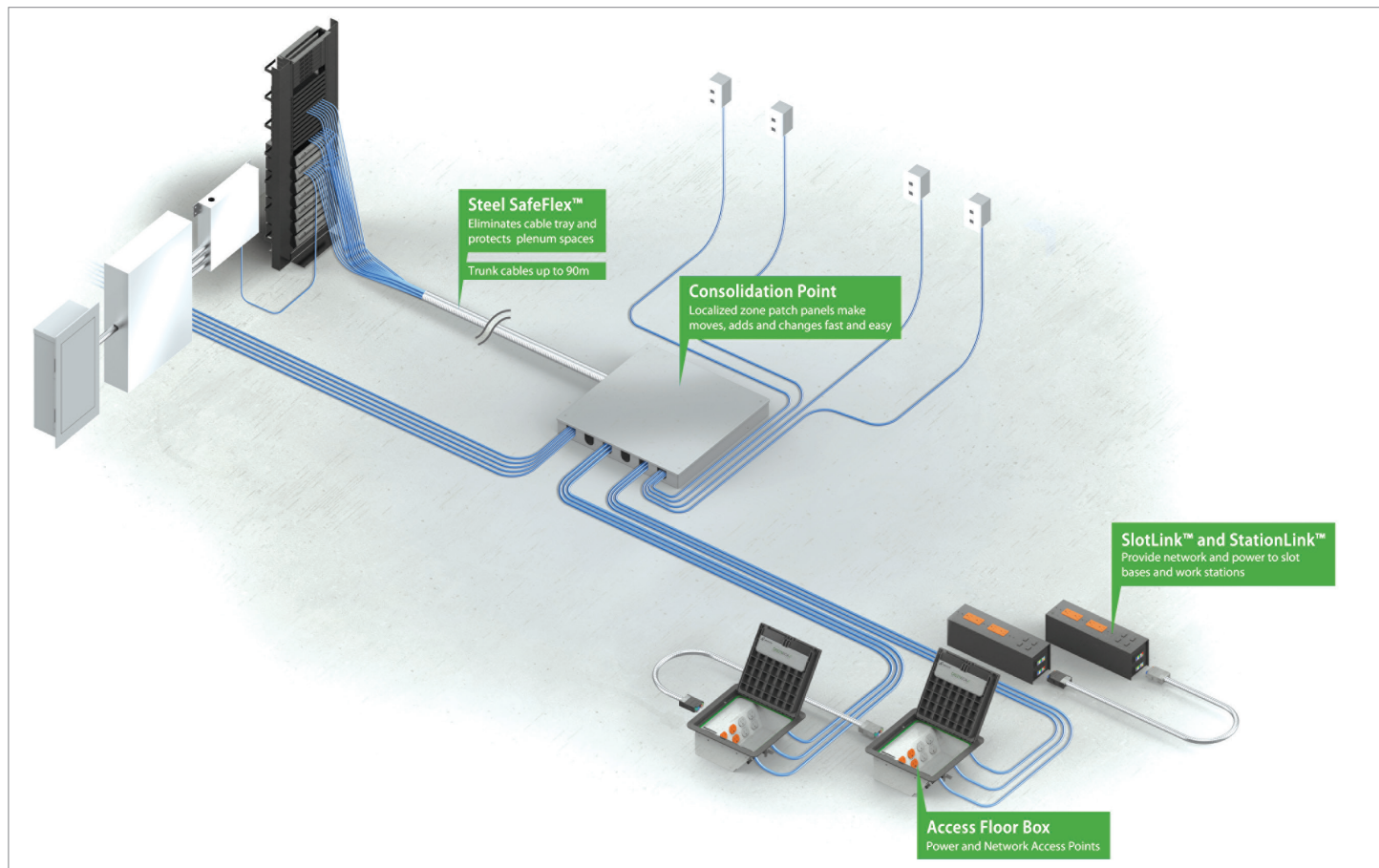
The reusable nature of Cii Drag & Drop Networking means you cut your raw material impact by orders of magnitude every time you reconfigure and rebuild. Rebuild just once and you cut your raw material impact by one half versus traditional installations.

**Combine Consolidation Points,
Access Floor Boxes and
Accessibility Products to
design your system today!**

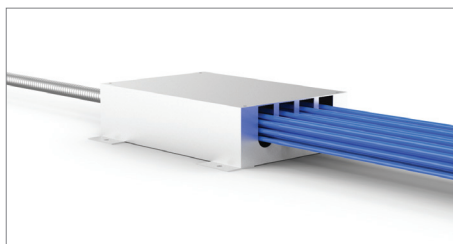
Zone Networking

If you aren't doing zone networking, you're doing it wrong!

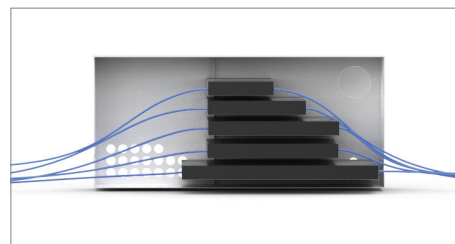
Zone networking is the most advanced way to bring services throughout your facility. Think of the convenience of a patch panel in every major work zone. This allows you to add workstations, printers and access points without having to rip up entire floors or tear down ceiling tiles all the way back to the server room. It's the right way to network.



Cii's consolidation points move the patch panel to the work space.



Fiber CP breaks out individual fiber strands



Active CP allows you to do advanced networking in plenum spaces

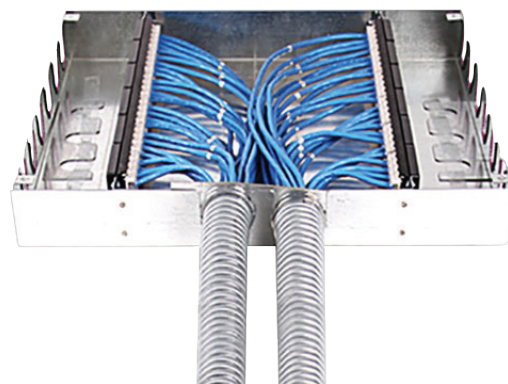
Zone Networking

Consolidation Point – Floor Cable Manager

Cii's Drag & Drop Network subdivides floors into zones. Each zone is serviced by a Consolidation Point fed by a trunk cable. Each Consolidation Point can be configured for 24, 48, 72 and 96 port density. Zone Consolidation Points allow network managers to add equipment and workstations without ripping up entire floors or tearing down hundreds of ceiling tiles. Simply add a transition cable to the CP and put the new drop anywhere in your zone. Workspace disruption is minimized. Core business productivity is preserved. Network managers are rewarded.

Features & Specifications:

- Available in either 24, 48, 72 or 96 port density
- Can be wired with either CAT5E, CAT6 or CAT6A
- Trunk cables are housed in flex conduit
- Eliminates need for cable trays, saving both time and money
- Economically preserves plenum spaces even when filled with standard CMR cables
- Factory terminated and tested reducing job-site labor and installation time
- Fluke test results shipped with every consolidation point
- Workstations, wireless access points, printers and other network clients can be added quickly and easily
- Constructed of 18-gauge galvanized sheet steel
- Consolidation Point
- Length: 20"
- Height: 2.6"
- Width: 20"
- Trunk Cable
- Diameter: 1.5"
- Length: Configurable to customer requirements (typically 100')





Allied Tube & Conduit ▸ AFC Cable Systems ▸ Heritage Plastics ▸ Marco ▸ Unistrut
Unistrut Construction ▸ Cii ▸ Calpipe Security ▸ Calbrite ▸ Calbond ▸ US Tray ▸ Flexicon
Power-Strut ▸ Calconduit ▸ Razor Ribbon ▸ United Poly Systems ▸ Vergokan ▸ Columbia-MBF
Cope ▸ Four Star Industries ▸ Eastern Wire + Conduit ▸ ACS/Uni-Fab ▸ Sasco Strut ▸ Kaf-Tech
Northwest Polymers ▸ Cascade Poly Pipe + Conduit ▸ FRE Composites ▸ Queen City Plastics

Atkore
2625 S. Wilson St. Suite 105
Tempe, AZ 85282

TOLL FREE / 800-679-9711
LOCAL / 480-464-8101
atkore.com/cii

Want to join a company that helps you build
the mindset, skill set and tool set for success?
Visit us at atkore.com/careers