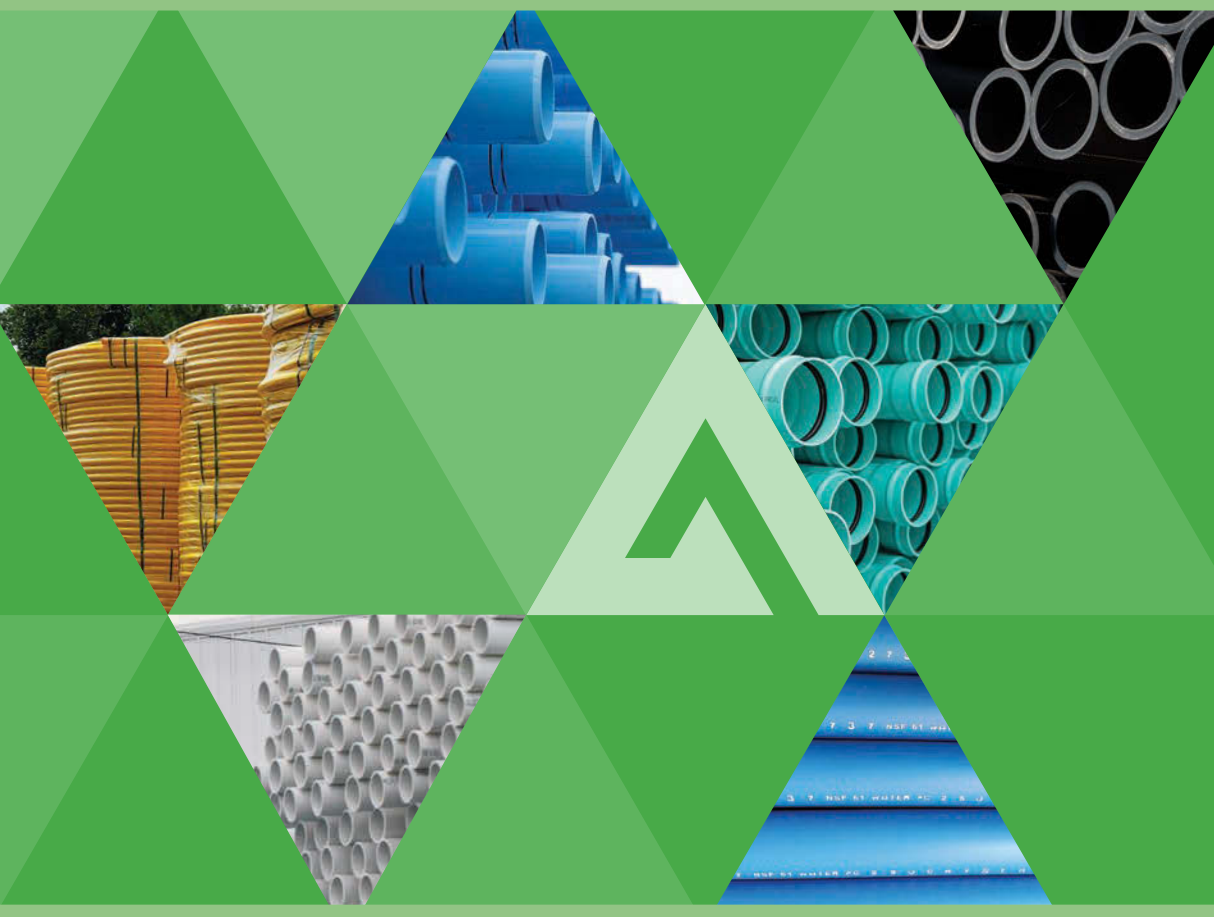


PVC and HDPE Water & Pressure Pipe



Atkore™ United Poly Systems

Visit atkore.com
for the latest
product updates.



POTABLE WATER PIPE

- Diameter range of ¾" – 26" offered
- IPS, CTS and DIPS pipe sizes
- Certified to NSF 61 and FM
- Conforms to AWWA C901, AWWA C906, ASTM D 2737, ASTM D 3035 and ASTM F 714
- Available in sticks, coils and reels
- Standard colors are black, black with blue striping and solid blue for tubing



WASTEWATER PIPE

- Diameter range of ¾" – 26" offered
- IPS, CTS and DIPS pipe sizes
- Conforms to AWWA C901, AWWA C906, ASTM D 2737, ASTM D 3035 and ASTM F 714
- Available in sticks, coils and reels
- Standard colors are gray, black with green striping and solid green for tubing



RECLAIMED PIPE

- Diameter range of ¾" – 26" offered
- IPS, CTS and DIPS pipe sizes
- Conforms to AWWA C901, AWWA C906, ASTM D 2737, ASTM D 3035 and ASTM F 714
- Available in sticks, coils and reels
- Standard colors are black with lavender striping and solid lavender for tubing



GEOHERMAL PIPE

- Diameter range of ¾" – 26" offered
- IPS pipe size
- Conforms to ASTM D 3035 and ASTM F 714
- Available in sticks, coils and reels
- Standard color is black



MINING PIPE

- Diameter range of 1" – 26" offered
- IPS pipe size
- Conforms to ASTM D 3035 and ASTM F 714
- Available in sticks, coils and reels
- Standard color is black with color striping available



HDPE NATURAL GAS PIPE

- Diameter range of ½" – 12" offered
- IPS and CTS pipe sizes
- Conforms to ASTM D 2513
- Available in sticks, coils and reels
- Standard color is black with yellow striping



MDPE NATURAL GAS PIPE

- Diameter range of ½" – 6" offered
- IPS and CTS pipe sizes
- Conforms to ASTM D 2513
- Available in sticks, coils and reels
- Standard color is solid yellow



OIL & GAS PIPE

- Diameter range of ¾" – 26" offered
- IPS pipe size
- Conforms to ASTM F 2619
- Available in sticks, coils and reels
- Standard color is black with color striping available



FIRE PROTECTION

- Diameter range of 4" – 26" offered
- IPS and DIPS pipe sizes
- Certified to FM
- Conforms to AWWA C906 and ASTM F 714
- Available in sticks, coils and reels
- Standard color is black with red striping



Allied Tube & Conduit • AFC Cable Systems • Heritage Plastics • Unistrut • US Tray
Unistrut Construction • Marco • Cii • Razor Ribbon • Calbond • Flexicon • Kaf-Tech
Power-Strut • Calconduit • FRE Composites • United Poly Systems • Sasco Strut • Calbrite
Elite Polymer Solutions • ACS/Uni-Fab • Vergokan • Columbia-MBF • Calpipe Security
Northwest Polymers • Cascade Poly Pipe + Conduit • Queen City Plastics • Cope

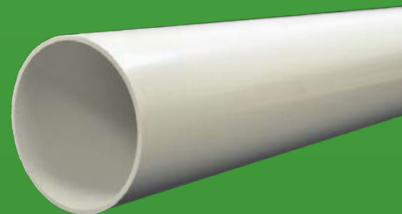
Learn more at atkore.com

Visit atkore.com
for the latest
product updates.



PVC CELLULAR CORE DWV SCHEDULE 40 PIPE

- Conforms to ASTM F 891
- Certified to the requirements of NSF/ANSI 14
- Product manufactured in plain end or with one integral solvent-weld bell per length
- Standard overall pipe length is 10 feet or 20 feet
- Standard color is white



PVC AWWA C900 PRESSURE PIPE

- Conforms to AWWA C900 and UL1285 as listed by NSF in accordance with Standard NSF/ANSI 14
- Listed to FM 1612 for DR 14 and DR 18 products
- Each spigot end is beveled to facilitate assembly and double reference marked to indicate proper insertion depth
- Product manufactured with one integral gasketed bell per length
- Standard laying length of pipe is 20 feet
- Standard color is blue
- Green and purple are available upon request



PVC SCHEDULE 40 PRESSURE PIPE

- Conforms to ASTM D 1785 and certified to the requirements of NSF/ANSI 61
- Conforms to ASTM D 2665 and is certified to requirements of NSF/ANSI 14 for DWV applications in 1-1/2", 2", 3", 4", 6" and 8" trade sizes
- Product manufactured with one integral solvent-weld bell per length
- Standard overall pipe length is 20 feet
- Standard color is white



PVC SCHEDULE 80 PRESSURE PIPE

- Conforms to ASTM D 1785
- Certified to the requirements of NSF/ANSI 61
- Product manufactured in plain end
- Standard overall pipe length is 20 feet
- Standard color is gray



PVC IPS GASKETED PRESSURE PIPE

- Conforms to ASTM D 2241
- Certified to requirements of NSF/ANSI 61
- Each spigot end is beveled to facilitate assembly and reference marked to indicate proper insertion depth
- Product manufactured with one integral gasketed bell per length
- Standard laying length of pipe is 20 feet
- Standard color is white



PVC IPS SOLVENT-WELD PRESSURE PIPE

- Conforms to ASTM D 2241
- Certified to the requirements of NSF/ANSI 61
- Product manufactured with one integral solvent-weld bell per length
- Standard overall pipe length is 20 feet
- Standard color is white



PVC PIP GASKETED PRESSURE PIPE

- Conforms to ASTM D 2241
- Each spigot end is beveled to facilitate assembly and reference marked to indicate proper insertion depth
- Products manufactured with one integral gasketed bell per length
- Standard laying length of pipe is 20 feet
- Standard color is white



PVC GASKETED SEWER PIPE

- Conforms to ASTM D 3034 and ASTM F 679
- Each spigot end is beveled to facilitate assembly and reference marked to indicate proper insertion depth
- Products manufactured with one integral gasketed bell per length
- Standard laying length of pipe is 14 or 20 feet
- Standard color is green



PVC SOLVENT-WELD SEWER PIPE

- Conforms to ASTM D 3034 DR 35 prior to perforation
- Product manufactured with one integral solvent-weld bell per length
- Standard overall pipe length is 10 feet or 20 feet
- Standard colors are white and green



PVC DRAINAGE PIPE

- Conforms to ASTM D 2729
- Product manufactured with one integral solvent-weld bell per length
- Standard overall pipe length is 10 feet
- Standard color is white



PVC NATURAL GAS SLEEVING

- Product manufactured with one integral solvent-weld bell per length
- Pipe is intended for sleeving applications and carries no pressure rating
- Standard overall pipe length is 20 feet
- Standard color is yellow



Western Region DWV, Pressure and Sewer Pipe

Diameter Ranges	
DWV Schedule 40 Cellular Core	1-1/2" - 6"
PR 165 DR 25 AWWA C900 GB	4" - 12"
PR 235 DR 18 AWWA C900 GB	4" - 12"
PR 305 DR 14 AWWA C900 GB	4" - 12"
Schedule 40 Pressure	1/2" - 8"
Schedule 80 Pressure	1/2" - 8"
PR 63 SDR 64 Gasketed	8"
PR 100 SDR 41 Gasketed	4" - 12"
PR 125 SDR 32.5 Gasketed	4" - 12"
PR 160 SDR 26 Gasketed	4" - 12"
PR 200 SDR 21 Gasketed	4" - 12"
PR 63 SDR 64 Solvent-weld	8"
PR 100 SDR 41 Solvent-weld	3" - 8"
PR 125 SDR 32.5 Solvent-weld	1-1/4" - 8"
PR 160 SDR 26 Solvent-weld	1-1/4" - 8"
PR 200 SDR 21 Solvent-weld	3/4" - 8"
PR 315 SDR 13.5 Solvent-weld	1/2"
ASTM D 3034 DR 35 Gasketed Sewer	4" - 15"
ASTM D 3034 DR 26 Gasketed Sewer	4" - 15"
ASTM F 679 PS 46 Gasketed Sewer	18"
ASTM F 679 PS 115 Gasketed Sewer	18"
ASTM D 3034 DR 35 Solvent-weld Sewer	4" & 6"
PR 80 SDR 51 GB PIP	6" - 15"
PR 100 SDR 41 GB PIP	6" - 15"
PR 125 SDR 32.5 GB PIP	6" - 15"
ASTM D 2729 Drainage	4" & 6"
Yellow Gas Sleeve	1-1/2" - 8"