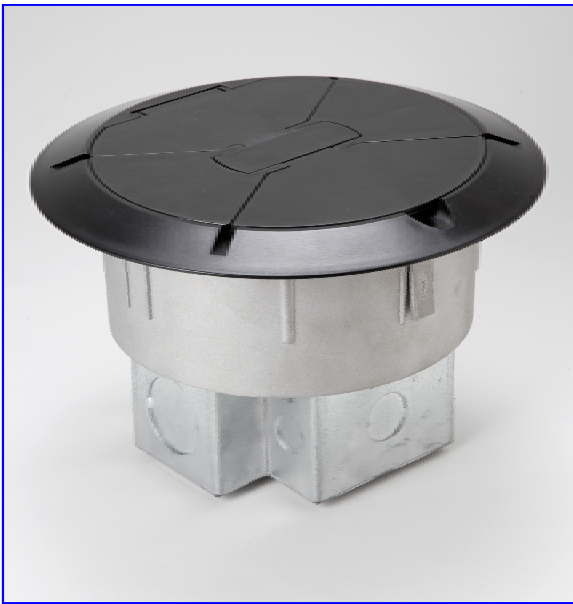
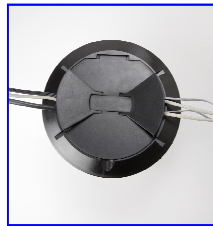


# Round PVD Servicenter™

## Flexible Convenient and Economical Power, Voice and Data Distribution



Today's architectural design frequently demands a more symmetrical option when it comes to terminating power, voice and data in the access floor. **Cii** has responded with a round PVD Servicenter™ designed to accommodate commercially available air diffusers most commonly used in raised access flooring applications.



PVD Servicenter™



Air diffuser

### Flexibility

- ◆ Round design allows the box to be installed in the same size hole as standard air diffusers – eliminates the need for multiple raised-floor tiles with custom-sized cutouts.
- ◆ Three-compartment stamped-steel box with voltage dividers accommodates both power and data outlets.
- ◆ General purpose, isolated and/or dedicated circuits
- ◆ Distribution of circuits to modular components, building systems or equipment.
- ◆ Multiple PVD Servicenters™ can be powered from single power source.
- ◆ Accommodates all voice/data options.

### Design Oriented

- ◆ Durable black polycarbonate cover features two cable-entry lids that lock in open position to prevent cable damage.
- ◆ Optional Steel lid available with multi-cable egress to allow 100% closure for maximum reduction in air loss. Available in multiple powder coat colors to match décor.
- ◆ Optional power tunnel links outside power compartments to feed both compartments with a single conduit – while still allowing for communications wiring in the center.
- ◆ Two thumbscrews secure PVD Servicenter™ firmly in place, but remove easily for reconfiguration.

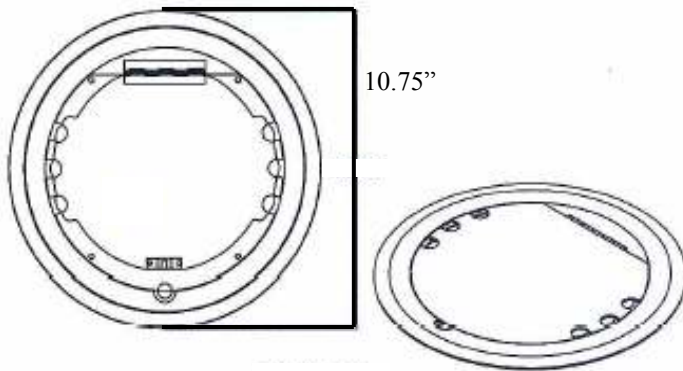
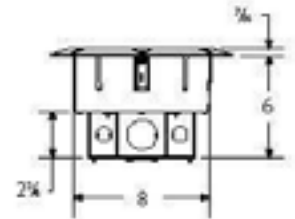
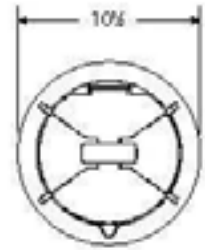
### Economical

- ◆ High quality design at low cost.
- ◆ Churn cost reduced due to drop-in design.
- ◆ Quick relocation when used with **Cii** plug and play modular wiring system.

# Technically Speaking



Plastic Lid

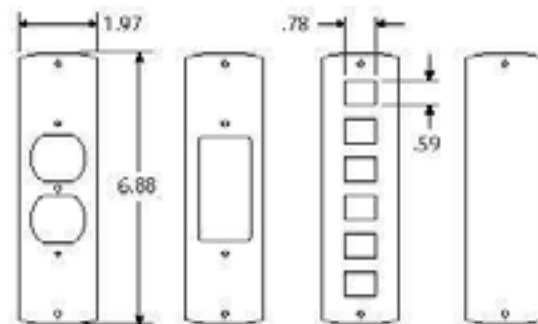
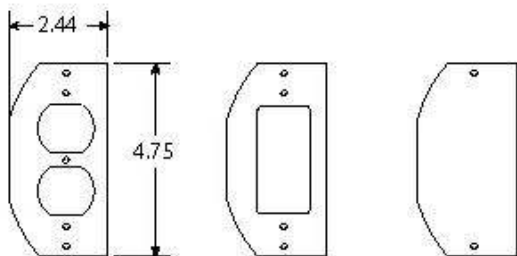


Metal Lid

◆ Outside compartments: 21cu. in. capacity,  $\frac{3}{4}$ " KO on side,  $\frac{1}{2}$ " KO on each end,  $\frac{1}{2}$ " KO and  $\frac{3}{4}$ " KO on bottom.

◆ Center compartment: 40 cu. In. capacity 1  $\frac{1}{4}$ " KO on each end, two removable access plates with  $\frac{3}{4}$ " KO on bottom.

◆ Fits into holes ranging from 8  $\frac{1}{4}$ " to 8  $\frac{3}{4}$ " in diameter.



Communications Integrators, Inc.  
Corporate Headquarters  
2625 S. Wilson St.  
Suite 105  
Tempe, AZ 85282

[www.ciinet.com](http://www.ciinet.com)

Phone: 480.464.8101  
Toll Free: 800.679.9711  
Fax: 480.668.8938  
Tech support: 800.679.9711